

TOSHIBA

Installation Instruction
ELECTRIC WATER HEATER
For Home Use Only

Model

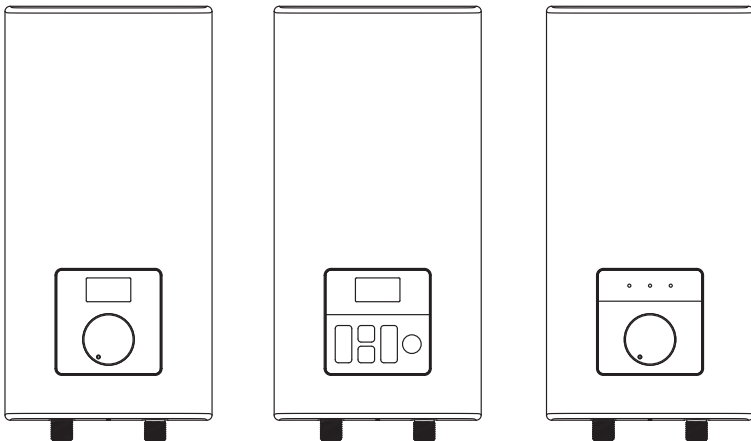
TWH-60EFNTH(K)-RS

TWH-48EFNTH(W)-CB

TWH-38EFNTH(W)-CB

TWH-48MFNTH(W)-WB

TWH-38MFNTH(W)-WB



Read this manual carefully before installation and use

After-sales engineers should test the ground resistance for the customers at least once per year to insure the grounding of the water heater is reliable

Sincerely thank you for selecting our electric water heater. Please read this manual carefully before use; correctly grasp the methods for installation and use of this electrical water heater, to make full use of its excellent performances. Please do preserve the instruction manual for future reference.

For any improper installation and incorrect operation of this product, our company will not be liable for any responsibility.

TABLE OF CONTENTS



TITLE	PAGE
1. Product introduction	(5)
2. Unit installation	(9)
3. Troubleshooting	(12)
4. Packing list	(13)

DO CONNECT GROUND WIRE TO THE PRODUCT, otherwise NO FUNCTION

SAFETY INSTRUCTIONS

All instructions described should be carefully read and followed.







- These instructions are precautions to prevent the risks of serious injury or death of the user, and any damages to property.

MARKINGS	
 WARNING	WARNING indicates high possibility of serious injury (*1) or death of the user.
 CAUTION	CAUTION indicates high possibility of injury (*2) or property loss (*3).






(*1) Serious injury – injury which requires hospitalization, lengthy treatment, or blindness, hot and cold skin burn, electric shock, broken bones or poisoning.

(*2) Injury – injury, skin burn or electric shock which does not require hospitalization or lengthy treatment.

(*3) Property loss – extended loss of houses, furniture, domestic animals or pets.

SYMBOLS	
 PROHIBITED!	 PROHIBITED! Indicates prohibited actions. Detailed instructions would be indicated on the inside of the circle or around the symbol in figures or in writing.
 IMPORTANT	 IMPORTANT Indicates mandatory actions. Detailed instructions would be indicated on the inside of the circle or around the symbol in figures or in writing.
 CAUTION	 CAUTION Recommends to take precautions. Detailed instructions would be indicated on the inside of the triangle or around the symbol in figures or in writing.

* Precautions for installation

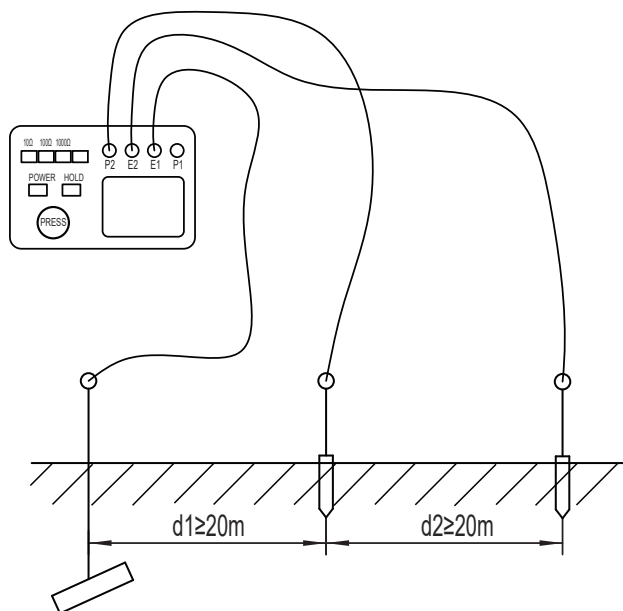
 WARNING	
 Household Use	This electric water heater is for household, and it can be installed wherever place that need hot water. Can not be used for business use.
 Classified Worker	Installation, piping works and wiring works or electrical construction should comply to relevant laws and follow the installation instruction. If fail to comply, leakage or electricity may lead to fire or electric shock.
 Prohibited	Do not install this electric water heater outside, indoor use only. It may result fire or electric shock.
	Plug is not used for this electric water heater; this electric water heater must be connected directly with power switch that comes with leakage-protection. Please distinguish live line (red/brown), neutral line (blue) and earth line (green/yellow) during installation. If using the earth leakage circuit breaker under out of order condition, it may result electric shock.

 220-240V~	<p>Specification: Only connect to main voltage 220-240V~. Do check whether the amperes of the household wiring enough. Directly connect to the AC outlet, and don't use multiple outlets. This may cause fire or electric shock.</p>
 Grounding	<p>Before installing this electric water heater, check and confirm the earth electrode on the socket is reliably earthed, without electricity. If there is no ground electrode or incorrect ground connection, the electric water heater will not work. Do not connect grounding wire to gases or water pipes. The grounding wire connection should be provided individually.</p>
	<p>The distance between water heater installed and water output should be as nearby as possible to avoid loss of heat.</p>
	<p>The electric water heater may be damaged if the water hardness is too high. To ensure longer product lifespan, please install and put it into use on condition that the local water hardness is less than 450mg/L (CaCO₃)</p>
 Blow Down	<p>Please blow down the water for about 10 seconds to drain away the impurities in the pipe before connecting the water source to the electric water heater to avoid blockage of water heater .</p>
 Prohibited!	<p>Do not place flammable materials or Gases near to the Electric water heater. It may result fire or explosion.</p>
 Validation	<p>Ensure the function of built-in ELCB (once a month). If using the ELCB under out of order condition, it may result electric shock.</p>
 Validation	<p>Check the earth connection periodically (1 times a year) by the Electrician. Otherwise you may receive an electric shock. This can lead to a serious injury or death.</p>
 Professional	<p>Do cut-off power supply before any maintenance. Any maintenance or adjustment towards this product by non-professional is highly prohibited.</p>
 Professional	<p>The damaged power cord must be replaced by a good power cord provided by the manufacturer, and the replacement should be done by a qualified technician or engineer or professionals of the similar products.</p>
	<p>In order to avoid a hazard due to inadvertent resetting of the Earth Leakage Circuit Breaker (ELCB), this electric water heater must not be supplied through an external switching device, such as timer or connected to a circuit that is regularly switched "On" and "Off " by the utility.</p>
	<p>Electric water heater is equipped with adjustable flow capacity safety valve. For safety use, please do not change its installation location and do not block its water outlet.</p>
	<p>This electric water heater can be used for other purpose, eg. Washing hands, dishes or foods, and so on. (Multi directional water supply is not available).</p>
 Prohibited!	<p>The outlet must not be connected to any tap or fitting other than those specified.</p>



Ground resistance measurement method:

- Connect the wire of measuring instrument according to the manual. Please check the diagram.
- Connect E1 to the ground wire, and connect E2, P2 to the auxiliary electrode of steel bar in the soil. The distance of E1, E2, P2 and steel bar should be greater than 20m. It requires the measurement site should avoid strong electric field, in order to reduce the measurement error.
- There are 4 terminals E1, E2, P1, P2 on grounding resistance measuring instrument. E1 and P1 are usually connected for convenience use. You only need to connect the E1 to the ground terminal and E2, P2 connected to the auxiliary electrode steel bar in the soil.
- If there is not soil to drill the steel bar in, you can connect P2, E2 to neutral terminal of the fire hose or floors, which can be considered as the ground resistance.
- Then, press the POWER button, select the appropriate test range (if not clear about the scope of the resistance, choose the biggest range, and then choose the smallest range.), press the PRESS key, the screen display number is the resistance value of grounding resistance of the house.



NOTE

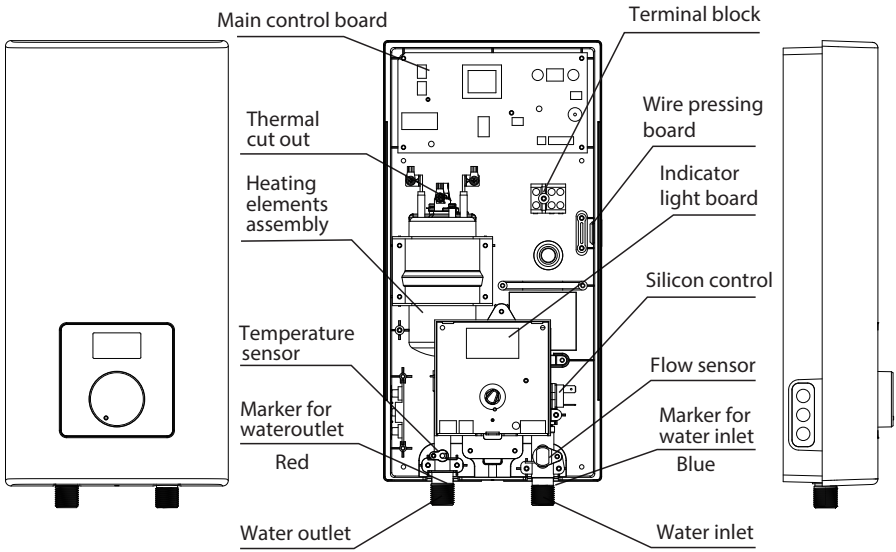
After-sales engineers should test the ground resistance for the customers at least once per year to insure the grounding of the water heater is reliable.

1. PRODUCT INTRODUCTION

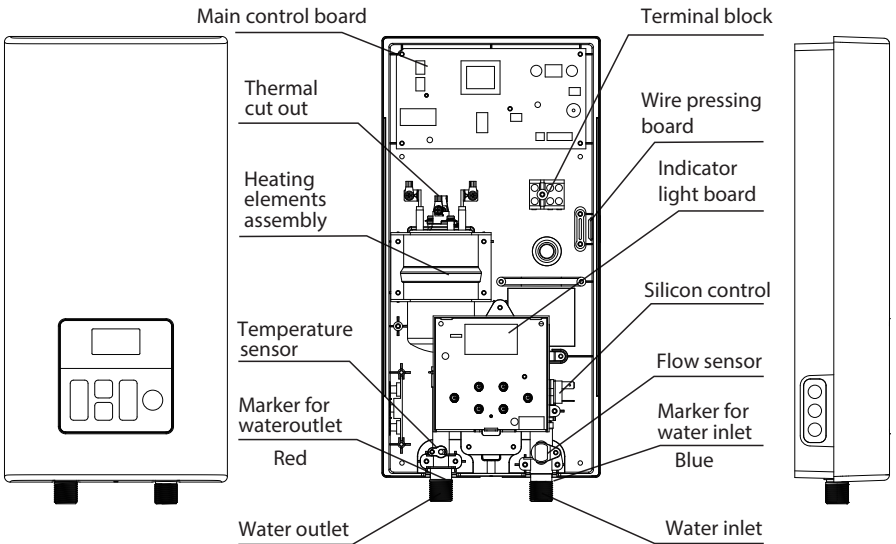
1.1 Technical Performance Parameters

Series	TWH-***FNTH(*)-**		
Model	TWH-60EFNTH(K)-RS	TWH-48EFNTH(W)-CB TWH-48MFNTH(W)-WB	TWH-38EFNTH(W)-CB TWH-38MFNTH(W)-WB
Rated Voltage	220 V ~	220 V ~	220 V ~
Rated Frequency	50 Hz	50 Hz	50 Hz
Rated Power	6000 W	4800 W	3800 W
Rated Current	27.3 A	21.8 A	17.3 A
Dia. Of Wire Core	4.0 mm ²	2.5 mm ²	2.0 mm ²
Air Switch with ELCB	≥30 A	≥25 A	≥20 A
Rated Pressure	0 MPa	0 MPa	0 MPa
Minimum Flow Rate	1.5 Liters/minute	1.5 Liters/minute	1.5 Liters/minute
Minimum Pressure	0.03 MPa	0.03 MPa	0.03 MPa
Maximum Pressure	0.3 MPa	0.3 MPa	0.3 MPa
Protection Class	I	I	I
Water Proof Class	IP25	IP25	IP25
Products Size (WxDxH)	200×99×400 mm	200×85×400 mm 200×99×400 mm	200×85×400 mm 200×99×400 mm
Water Pump	No Pump	No Pump	No Pump

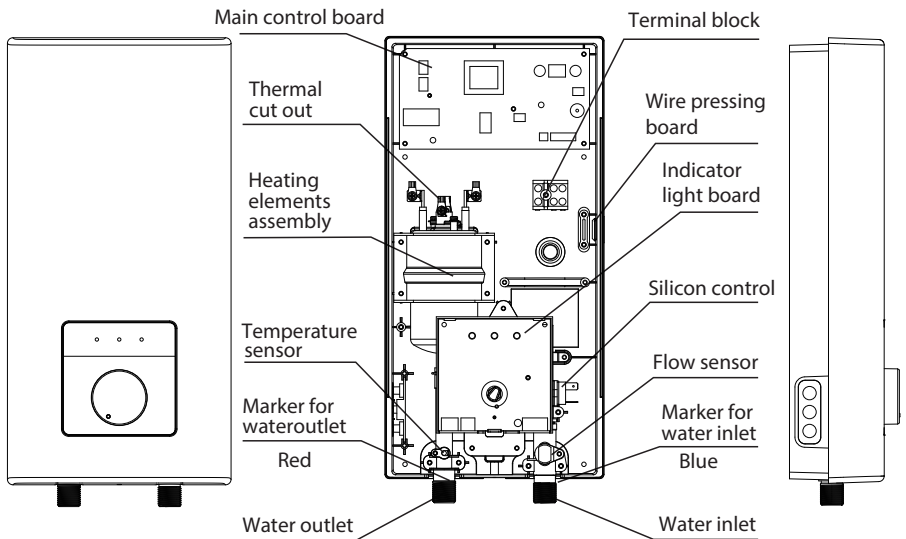
1.2 Parts Identification



↑ PRODUCT STRUCTURE FOR TWH-60EFNTH(K)-RS

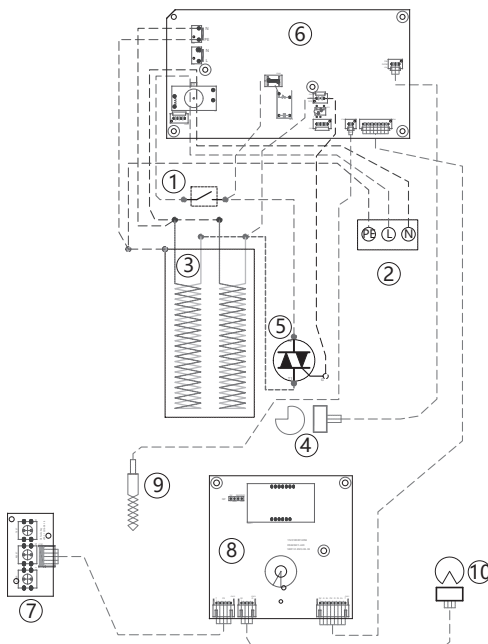


↑ PRODUCT STRUCTURE FOR TWH-**EFNTH(W)-CB



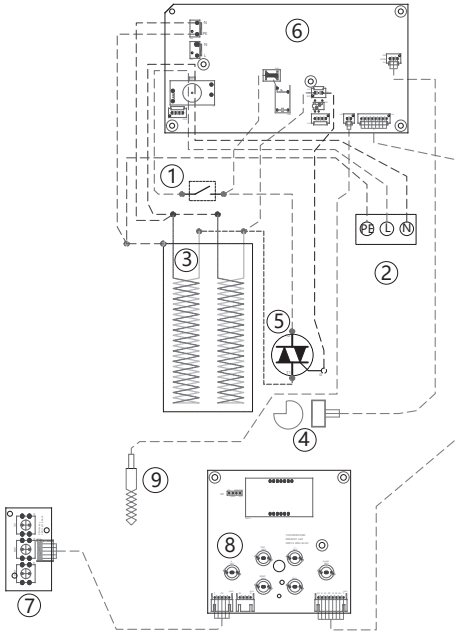
↑ PRODUCT STRUCTURE FOR TWH-**MFNTH(W)-WB

1.3 Internal Wire Diagram



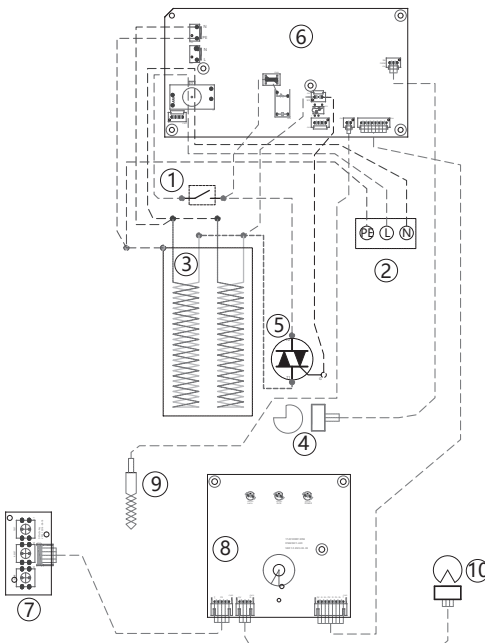
WIRING DIAGRAM FOR:
TWH-60EFNTH(K)-RS

- ①: Thermostat
- ②: Terminal Block
- ③: Heating Elements
- ④: Flow Sensor
- ⑤: Silicon Control
- ⑥: Main Control Board
- ⑦: Key board
- ⑧: Indicator Light
- ⑨: Temperature Sensor
- ⑩: Knob potentiometer



WIRING DIAGRAM FOR:
TWH-**EFNTH(W)-CB

- ①: Thermostat
- ②: Terminal Block
- ③: Heating Elements
- ④: Flow Sensor
- ⑤: Silicon Control
- ⑥: Main Control Board
- ⑦: Key board
- ⑧: Indicator Light
- ⑨: Temperature Sensor



WIRING DIAGRAM FOR:
TWH-**MFNTH(W)-WB

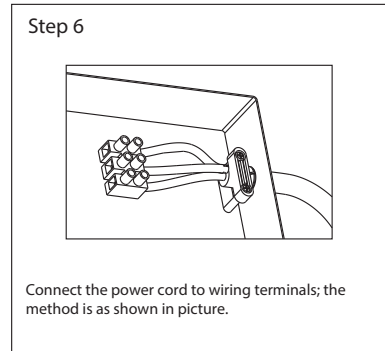
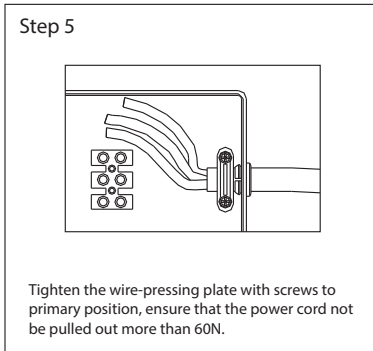
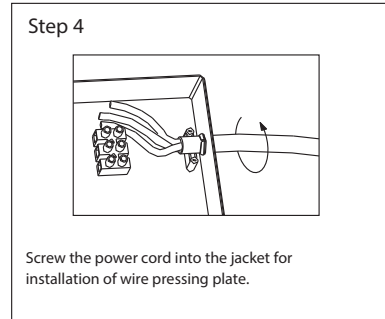
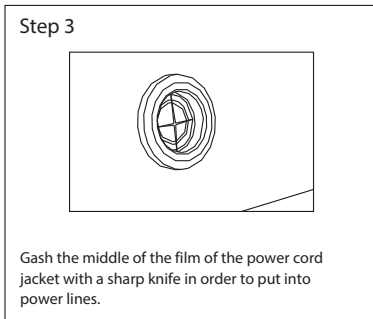
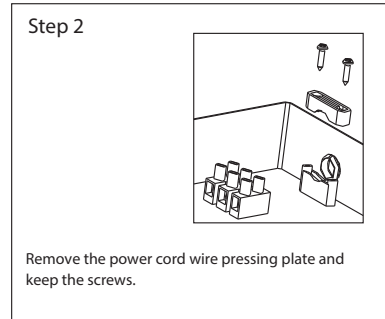
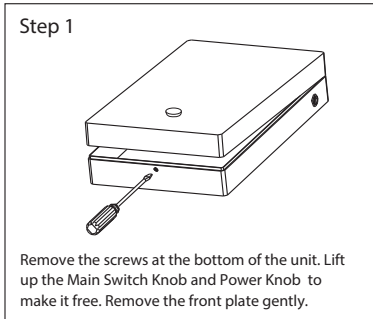
- ①: Thermostat
- ②: Terminal Block
- ③: Heating Elements
- ④: Flow Sensor
- ⑤: Silicon Control
- ⑥: Main Control Board
- ⑦: Key board
- ⑧: Indicator Light
- ⑨: Temperature Sensor
- ⑩: Knob potentiometer

2. UNIT INSTALLATION

2.1 Installation Instruction

- ① Check the capacity of power circuit; (220-240 V~, $\geq 30A$)
- ② Power cord installation;
- ③ Water heater installation;
- ④ Plumbing connection;
- ⑤ Power supply connection;
- ⑥ Water Supply.

2.2 Power Cord Installation



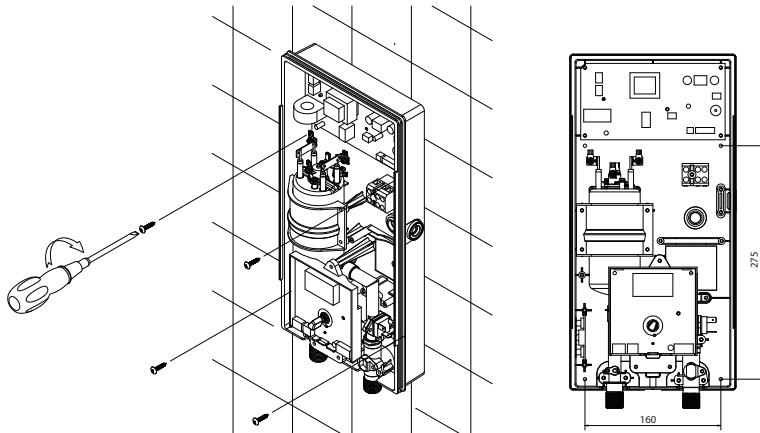


NOTE

The installation position of neutral line (blue), live line (brown/red) and earth line (green/yellow) should be corresponding to the other end on wiring terminals.

2.3 Water Heater Installation

- ① Determine installation position of the unit according to length of power cord / position of air switch (Distance between bottom and floor should be $\geq 1.6\text{m}$).
- ② Make sure the distance between the unit and surrounding wall is not less than 300mm, so that to have enough space for maintenance purpose.
- ③ Determine the position of four fixing screws (attached with the unit), make four holes with corresponding depth in the wall by means of a drill and drive a wall plug into the hole.
- ④ Fix the back cover to the wall with 4 screws, connect the power cord and install the flow valve, the inlet pipe and the outlet pipe. (See Fig.1)
- ⑤ Open the flow valve to allow the water go through the heater then turn the power on. Test the machine unit it works well. then close the front cover and lock with screws from the bottom.



No horizontal, inverted, inclined installation!

(Fig.1)

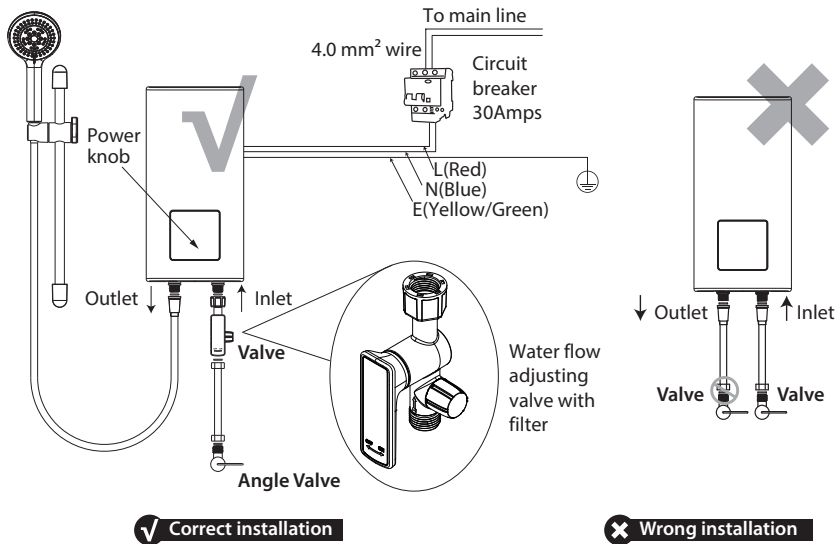
2.4 Plumbing Connection

- ① Water valve with filter should be installed at water inlet of the unit, sealing ring with filter should be used at end face. (See Fig.2).
- ② Shower flexible tube should be connected with water outlets and shower head separately, attached sealing ring should be used at end face.



WARNING

Metallic / chromed hose and conductive control valve shall not be used.



✓ Correct installation

✗ Wrong installation



WARNING

(Fig.2)

It is prohibited to close the water outlet using a valve or restrict water flow by other means or devices. The water outlet should always remain opened ensuring free continuous to avoid the water heater damage, leakage and security incidents!
Water flow adjusting valve with filter must be used when install the unit. Blue marker stands for water inlet, red marker stands for water outlet. Do not overexert to avoid damaging the water heater.

2.5 Power Supply Connection

- ① Adjust power knob to "OFF";
- ② Choose air switch with leakage protection according to power of water heater;
- ③ When connecting the water heater to electric network, please pay attention to connect live line (red/brown), neutral line (blue) and earth line (yellow/green) with corresponding line in electric network.



NOTE

A private power cord should be used for this unit. After connecting to electric network, please check the earth condition. Otherwise you may receive an electric shock. This can lead to a serious injury or death.

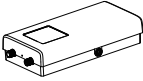

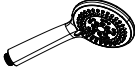

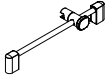








2.6 Water Supply

After all the plumbing is finished connecting, open water inlet valve of the product and supply water to the unit to drain away air inside until there is stable water flow comes out from shower head. Check whether there is leakage at joints or not. If there is, check whether the connecting parts are fastened or not, then re-supply water.

3. TROUBLESHOOTING

SYMPTOMS	REASONS	SUGGESTIONS
Switch on the power supply, The screen displays nothing	<ol style="list-style-type: none"> 1. Power supply error; 2. PCB error; 3. Electricity leaks. 	<ol style="list-style-type: none"> 1. Check whether power is cut ; 2. Contact authorized service personnel for repair.
The heating indicator light is off and the outlet water is cold.	<ol style="list-style-type: none"> 1. The power supply is not turned on; 2. PCB error ; 3. The water flow is less than 1.5L/min ; 4. The flow sensor is faulty ; 5. The rotor of the flow sensor is blocked by impurities. 	<ol style="list-style-type: none"> 1. Turn on the power supply; 2. Repair or replacement the PCB; 3. Adjustable water flow ; 4. Change the flow sensor ; 5. Open the flow sensor and clean the rotor.
The heating indicator light is on and the outlet water is cold	<ol style="list-style-type: none"> 1. The silicon control is broken; 2. Heating elements is broken. 	<ol style="list-style-type: none"> 1. Change the silicon control; 2. Change the heating elements.
No water flows out from the shower head.	<ol style="list-style-type: none"> 1. The running water supply is cut off; 2. The inlet valve of running water is not open. 	<ol style="list-style-type: none"> 1. Wait for restoration of running water supply; 2. Open the inlet valve of running water.
Outlet water temperature sometimes is hot, sometimes is cold.	<ol style="list-style-type: none"> 1. Water pressure is not stable 2. Outlet water temperature is too high, overheating protection again and again. 	Adjust the heating power lower, make the water flow bigger
The display shows "E1" or "E3" and flashes.	<ol style="list-style-type: none"> 1. Flashing "E1" on the screen indicates that the outlet temperature sensor is faulty. 2. The screen flashing "E3" indicates heating element dry burning and Triac abnormal. 	Contact authorized service personnel for repair.
The display shows "EC" and flashes to indicate communication failure	<ol style="list-style-type: none"> 1. Poor connection between main control board and display board; 2. The display board software or main control board software is incorrect, resulting in abnormal communication; 3. The main control board dials the code incorrectly. 	<ol style="list-style-type: none"> 1. Check whether the connection between the main control board and the display board is loose, unplug and plug it in again; 2. Contact authorized service.
The "⊕" on the screen Flash and heater doesn't work	The heater is not connected to the ground wire.	Test the ground resistance with a grounding resistance meter. Connect ground wire properly
"ELCB" indicator flashes	Leakage of electricity occurs.	Cut off the power supply and Contact authorized service.
"HEATING" indicator flashes.	The outlet water temperature sensor is faulty.	Contact authorized service.
The "⊠" on the screen Flash and Water is not hot.	The outlet water temperature cannot reach the set temperature.	Turn down the inlet water flow or reduce the set temperature.

4. PACKING LIST

Number	Name	Image	Quantity (pcs)	Remarks
1	Instant Electric Water Heater		1	
2	Water flow adjusting valve		1	
3	shower		1	
4	hose		1	Contains 2 sealing rings
5	Bar		1	
6	Seal ring		2	
7	Seal ring (including filter)		2	
8	Plastic expansion tube		4	
9	Mounting screws		4	
10	Instruction Manual		1	
11	Installation warning sheet		1	
12	Installation Instruction		1	
13	Warranty Card		1	

