

# TOSHIBA

## Fully Automatic Washing Machine

### OWNER'S MANUAL

Model :

AW-M901BT

Read This Manual

Please Read and follow the instructions carefully.

Please Keep this owner's manual handy for future use.

16138000A44286

6348448301

# CONTENTS

---

## SAFETY INSTRUCTIONS

- Safety instructions ..... 2

## INSTALLATION

- Product description ..... 8
- Installation area ..... 9
- Unpacking the washing machine ..... 9
- Base Cover Installation ..... 9
- Levelling the washing machine ..... 10
- Selection of tap ..... 11
- Connection of inlet hose, tap and washing machine..... 11

## OPERATION

- Preparation before washing..... 12
- Washing ..... 12
- After washing..... 12
- Washing matters needing attention ..... 13
- The usage of detergent and washing powder..... 13
- Control panel ..... 14
- Option..... 15
- Personalized setting of washing course..... 16
- Operations of washing process..... 16
- Washing course table ..... 17
- Recommended detergent amount..... 18

## Maintenance

- Cleaning and care ..... 19
- Cleaning the cabinet..... 19
- Cleaning the inlet filter ..... 19
- Trouble shooting..... 20
- Technical specifications..... 21
- Energy efficiency test program..... 21

# SAFETY INSTRUCTIONS

---

For your safety, the information in this manual must be followed to minimize the risk of fire or explosion, electric shock, or to prevent property damage, personal injury or loss of life.

- This appliance is not intended for use by persons (including children) with reduced physical, sensory or mental capabilities or lack of experience and knowledge unless they have been given supervision or instruction concerning use of the appliance by a person responsible for their safety.
- Children should be supervised to ensure that they do not play with the appliance.
- If the supply cord is damaged, it must be replaced by the manufacturer, its service agent or similarly qualified persons in order to avoid a hazard.
- The new hose-sets supplied with the appliance are to be used and that old hose-sets should not be reused.
- The openings must not be obstructed by a carpet.
- This appliance is intended to be used in household .

# SAFETY INSTRUCTIONS

Model	Washing Capacity	Standard Water Pressure
AW-M901BT	8.0kg	0.03MPa ~ 0.8MPa

## Explanation of the symbols:

### Warning!

This combination of symbol and descriptive word indicates a potentially dangerous situation which may result in death or serious injuries unless it is avoided.

### Caution!

This combination of symbol and descriptive word indicates a potentially dangerous situation which may result in slight or minor injuries or damage to property and the environment.

### Note!

This combination of symbol and descriptive word indicates a potentially dangerous situation which may result in slight or minor injuries.

# SAFETY INSTRUCTIONS

---

## Warning!

### The electric shock!

- This washing machine is for indoor use only.
- Do not put this washing machine in a humid place.
- Hands should not be inserted into the rotating drum .
- Before doing any maintenance the unit, unplug the appliance from the electrical source.
- Always unplug the machine and turn off the water supply after use. Be aware of the maximum and minimum inlet water pressure which is in megapascals (MPa)
- To ensure your safety, power plug must be inserted into an earthed three-pole socket. Check carefully and make sure that your socket is properly and reliably earthed.
- Make sure that the water and electrical devices provisions are connected by a qualified technician in accordance with the manufacturer's instructions and local safety regulations
- This product is used only domestic.

# SAFETY INSTRUCTIONS

---

## Risk to children!

- The appliance can not be used by children and persons with reduced physical sensory or mental capabilities or lack of experience and knowledge if they have been given supervision or instruction concerning use of the appliance in a safe way and understand the hazards involved.

Cleaning and user maintenance shall not be done by children without supervision.

- Animals and children can not climb into the machine. Check the machine before every operation.
- Children should be supervised that they do not play with the appliance.
- Keep children and animals far away from the machine during operation.

## Risk of explosion!

- Do not wash or dry articles that have been cleaned in, washed in, soaked in, or dabbed with combustible or explosive substances( such as wax, oil, paint, gasoline, degreasers, dry-cleaning solvents, kerosene, etc.) .This may result in fire or explosion.
- Rinse the clothes or wash articles thoroughly by hand before putting them in the appliance .

# SAFETY INSTRUCTIONS

---

## Caution

### Installing the product!

- This washing machine is for indoor use only.
- It is not intended for built-in using.
- The openings must not be obstructed by a carpet.
- The washing machine shall not be installed in bath rooms or very wet rooms as well as in the rooms with explosive or caustic gases.
- Remove all packaging materials before using the appliance. Otherwise, serious damage may result.
- The washing machine with single inlet valve may only be connected to a cold water supply.
- The plug must be accessible after installation.
- Avoid place where the machine is exposed to direct sunlight. Plastic parts may become deformed or discolored. Avoid place where the machine may become frozen during cold weather.

### Risk of damaging appliance!

- Your product is only for home use and is only designed for textiles suitable for washing machine.
- Do not climb up and sit on the glass lid of the machine.
- Cautions during Machine Handling and transport:
  - 1.The accumulated water shall be drained out of the machine.
  - 2.Handle the machine carefully. Never hold protruding parts of the machine while lifting.
  - 3.This appliance is heavy, it should be transported carefully.
- Please do not close the glass lid with excessive force.
- It is forbidden to wash carpets.

# SAFETY INSTRUCTIONS

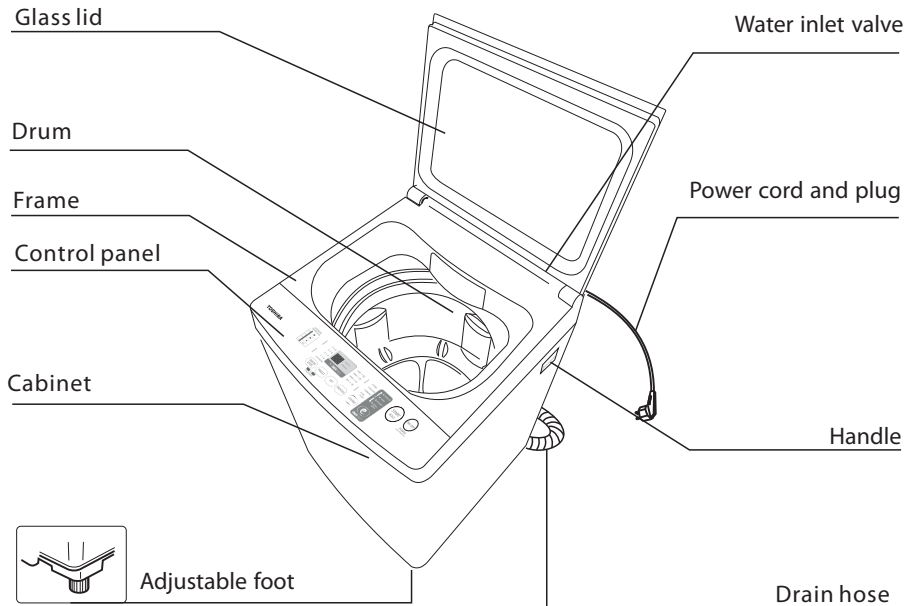
---

## Operating the appliance!

- Before washing the clothes for the first time, the product shall be operated without clothes using tub clean as the displayed program on the control panel.
- Flammable and explosive or toxic solvents are forbidden. Gasoline and alcohol etc. Shall not be used as detergents. Please only select the detergents suitable for washing machine, especially for top-loading fully automatic washing machines.
- Make sure that all pockets are emptied. Sharp and rigid items such as coins, brooches, nails, screws or stones etc. may cause serious damage to this machine.
- Never refill the water by hand during washing.

# INSTALLATION

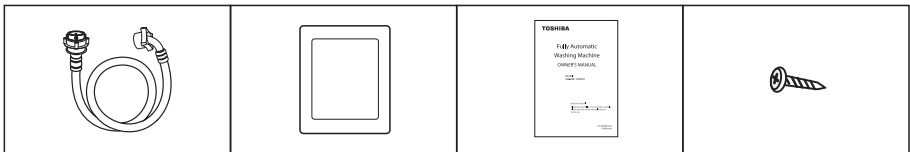
## ■ Product description



### Note!

- All illustrations in this manual are for reference only. Please refer to the product ,for actual appearance of the parts.

## Accessories



Inlet hose assy

cabinet baseboard

manual

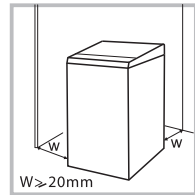
screw

# INSTALLATION

## ■ Installation Area

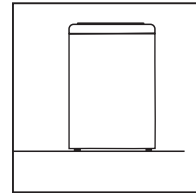
### ⚠ Warning!

- Stability is important to prevent the product from moving!
- Make sure that the product does not stand on the power cord.



Before installing the machine, the location characterized as follows shall be selected:

1. Rigid, dry, and level surface
2. Avoid direct sunlight
3. Sufficient ventilation
4. Room temperature is above 0°C
5. Keep far away from fuel sources such as coal or gas

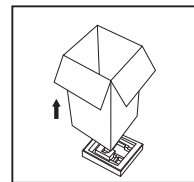


## ■ Unpacking The Washing Machine

### ⚠ Warning!

- Packaging material (e.g. Films, Styrofoam) can be dangerous for children.
- There is a risk of suffocation! Keep all packaging materials well away from children.

1. Remove the cardboard box and styrofoam packing.
2. Lift the washing machine and remove the base packing.
3. Remove the tape securing the power supply cord and drain hose.
4. Pick up the inlet hose from the drum.



### 📌 Note!

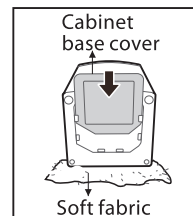
- Do not operate the washing machine with the base packing still intact with the unit. It will cause damage to the machine.

## ■ Base Cover Installation

- Running the machine or washing while placing on the bottom foam is strictly forbidden

Lean the washing machine backward at a specific angle, then insert the cabinet base cover into washing machine base trough, push it to the end.

Fix the cabinet base cover and cabinet base with all screws coming with the machine.

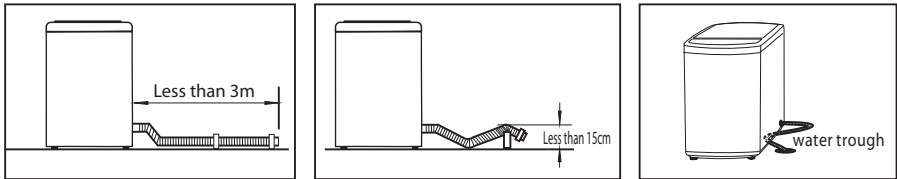


# INSTALLATION

## ⚠ Warning!

- Do not kink protract or compress the drain hose.
- Position the drain hose properly, otherwise , improper position may result in water leakage.
- If drain hose is too long, do not force it into washing machine as this will cause abnormal noises.

The way to place the end of drain hose:



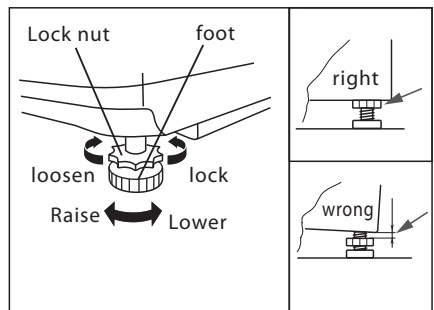
Drain direction	Left or right style	
Picture	 Right	 Left

## ■ Levelling the washing machine

### ⚠ Warning!

- The lock nuts on two feet must be screwed tightly against the housing.

1. Check if the feet are properly attached to the cabinet. If not, please rotate them to their original position and tighten the nuts.
2. Check alignment of the product with a leveler and do the succeeding steps if necessary.
3. Loosen the lock nut and rotate the foot either clockwise or counter clockwise , until it closely contacts with the floor.
4. Assure that the lock is secure and then alternately press the four top corners of the machine, to check if the proper adjustment has been done.



# INSTALLATION

## ■ Selection of tap

Please select appropriate tap.



Ordinary tap



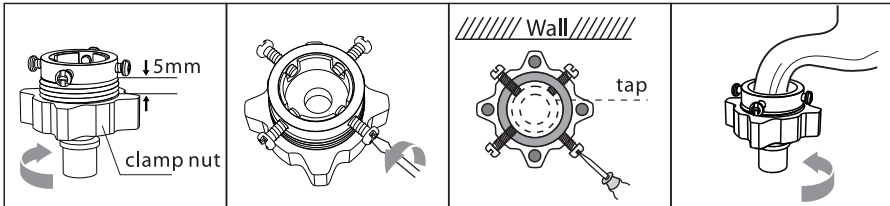
Screw tap



Special washing machine tap

## ■ Connection of inlet hose, tap and washing machine

1: Connection between ordinary tap and inlet hose.

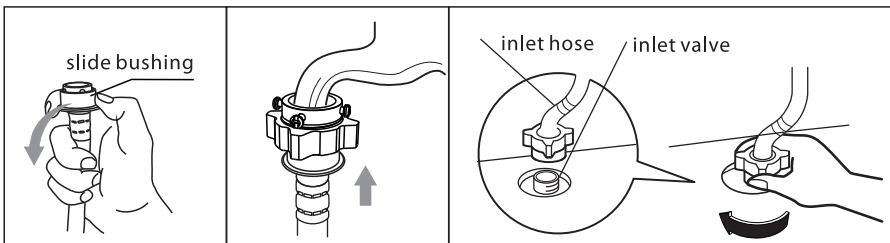


1. Loosen clamp nut to show 5mm groove

2. Loosen four screws

3. Set connecting base on tap and tighten screws evenly

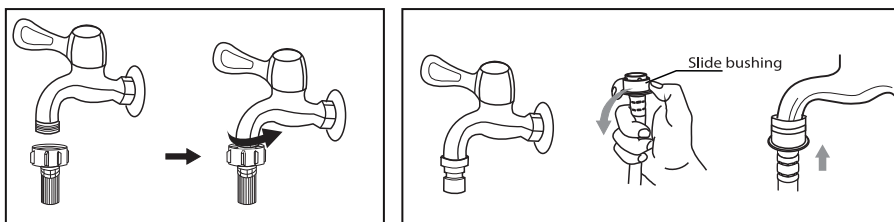
4. Tighten clamp nut



5. Press slide bushing, insert inlet hose into connecting base

7. After connection and installation, check if there is water leakage

2: Connection between special tap and inlet hose.



tap with threads and inlet hose

special tap for washing machine

### ⚠ Warning!

- To prevent leakage or water damage, follow the above-mentioned instructions!
- Do not kink, crush, modify or cut the water inlet hose.

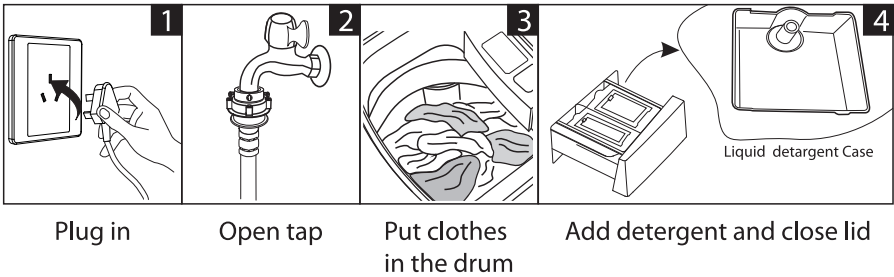
# OPERATION

## ■ Preparation Before Washing

### ⚠ Caution!

- Before washing, please make sure that the unit is installed properly.
- Before washing for the first time, the washing machine shall be operated without clothes using tub clean as the displayed course on the control panel.

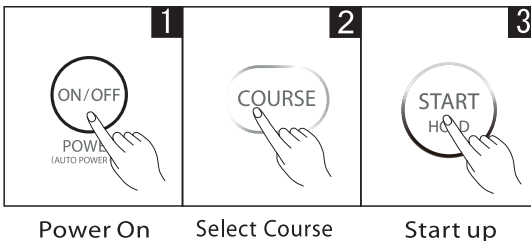
A complete cycle is as shown below



### 📌 Note!

- In the case of Liquid detergent , it is used by this case .

## ■ Washing



### 📌 Note!

- Water level can be selected manually .

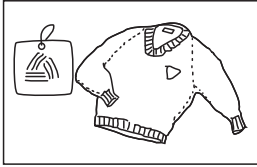
## ■ After Washing

The buzzer will beep after washing finished and the power supply will be cut off automatically . At this point , you may unload the laundry.

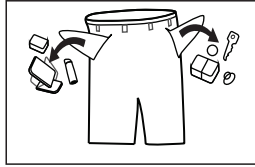
# OPERATION

## ■ Washing matters needing attention

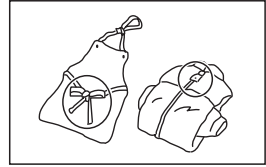
- Before washing ,please check the clothes labels and the detergent usage instructions. Use low-density detergent before wash suitable for washing machines .



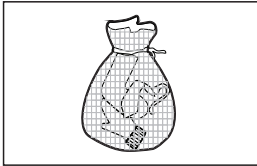
Check the label



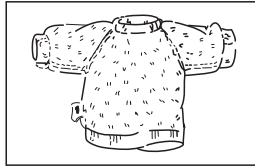
Take items out of the pockets



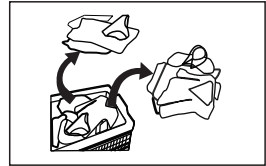
Tie tassels into Knot, fasten zippers and buttons



Put small clothes into a laundry net



Turn the following clothes inside out those that easily form fiber on its surface and those with long strands of fiber



Segregate clothes with varying textures or materials

### ⚠ Warning!

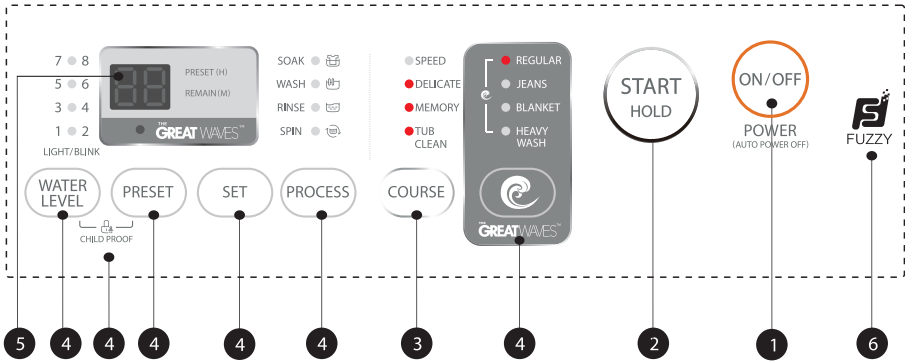
- Washing a single piece of clothing may cause , severe unbalance and consequently sound an alarm. In this case, it is suggested to add one or two more pieces of clothing to the wash load that will also make spinning smoother.
- Do not wash clothes stained with kerosene ,touching gasoline, alcohol and other flammable materials.

## ■ The usage of detergent and washing powder

- As for powder detergent that can form into clusters or masses, it is suggested to dilute the detergent with some water ,before pouring into the detergent box, this will prevent the inlet of the detergent box from clogging and water from over flowing during the filling process.
- Choose the suitable type of detergent for the various washing temperature to get the best washing effect with less water and energy consumption.

# OPERATION

## Control Panel



### Note!

- This illustration is for reference only. Please refer to the product ,for actual appearance.

#### 1 On/Off

Turns the unit on and off.

#### 2 Start/Hold

Press this button to start or Hold the washing cycle.

#### 3 Course

Available according to the laundry type.

#### 4 Option

This allows you to select an additional function and will light up when selected.

#### 5 Display

The display shows the settings, estimated remaining time , options, and status messages for your washer. The display will remain on throughout the cycle.

#### 6 Fuzzy

The washing machine will select the water level automatically according to the load weight.

- When there's water in the tub, this function is not available.
- Before pressing [Start/Hold] button, if the user selected the water level, there will be no fuzzy weighting function.
- After pressing [Start/Hold] button, the washing machine will run the fuzzy weighting function.

### Note!

- REGULAR,JEANS,MEMORY,HEAVY WASH Course has fuzzy weighting function.

# OPERATION

## ■ Option

Only for models having these functions.



### Water level

select the water level according to clothing categories, degree of soiling and washing habits of users



### Wash /Rinse /Spin

washing time, number of rinses , spinning time and other settings can be selected



### Function

To select one of the following functions, Soaking , washing, rinsing or spinning



### Preset

1. Select a course
2. Press the Preset button to choose the start time before operation starts
3. Press [Start/Hold ] to commence the Preset operation



On

Choose the course

Setting preset time

Start

Press the [Preset] button repeatedly , to see Preset time choices ,the Preset time should be set before starting the course. If you want to set the Preset time , after the course has already started, the on/off button should be pressed to reset the course

## ⚠ Caution!

- If there is any interruption in the power supply while the machine is operating, a special memory stores the selected program and recalls the memory setting when the power is restarted.



GREATWAVES is able to shorten wash time by special rhythm and water flow.



On

GREATWAVES™

Start

The GREATWAVES lit

- REGULAR
- JEANS
- BLANKET
- HEAVY WASH



### CHILD PROOF

To avoid mis operation by children.



On

Start

To activate CHILD PROOF press the two buttons at the same time

## ⚠ Caution!

- If this mode is set to ON and the lid opened during operation, the buzzer beeps , the indicator flashes , the washer stops water supply and stops wash/spin operation, and drains water from wash tub approximately 20 seconds of the lid opening.
- The " CHILD PROOF" will lock all buttons except [ On/Off ].

# OPERATION

## ■ Personalized setting of washing course

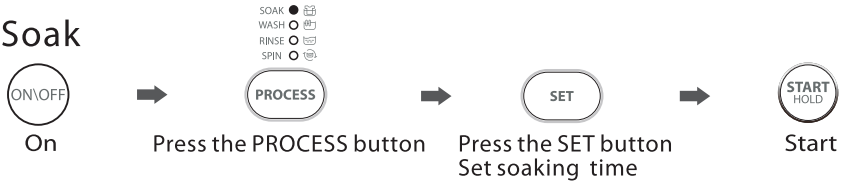
The user can select washing course according to the actual need, and set washing time, number of rinses, spinning time, water volume and course start time.



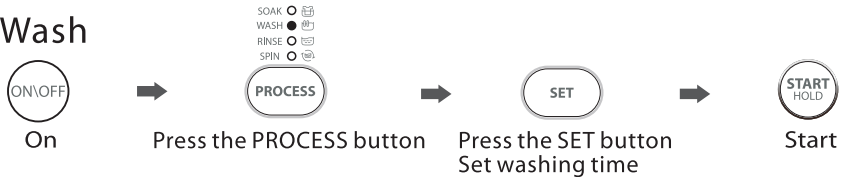
## ■ Operations of washing process

The user can set a single process or combinations of washing, rinsing and spinning freely according to the need. Detailed operations are as follows for different models:

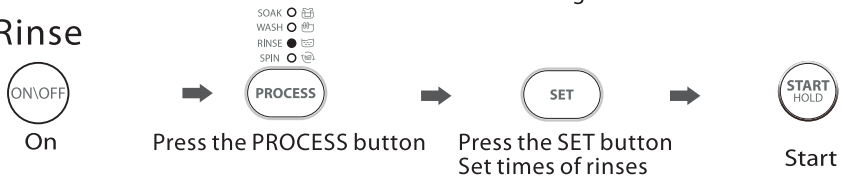
### Soak



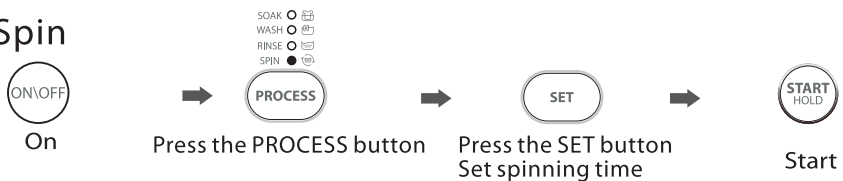
### Wash



### Rinse



### Spin



### Note!

- Other process combinations are similarly set, as the above examples. You can choose the following parameters : SOAK :0,10,20,30,40,50,60minutes WASH:15-20minutes RINSE:1-4times SPIN:1-9minutes.

# OPERATION

---

## ■ Washing Course Table

Courses are available according to the laundry type.

Only for models having these functions:

Course	
SPEED:	Suitable to wash lightly- stained clothes and clothes for summer.
DELICATE:	Mid/High/Low water level selection, the tempo is soft, slow washing and spinning speed, for minimal wear and deformation.
MEMORY:	Press "Start \Hold " to set the memory .To recall the memory ,press Power on ,select the memory course and the stored cycle will come up
TUB CLEAN:	With intermittent spinning the dirt on the inner & outer surfaces of the drum, as well as the pulsator are removed.
REGULAR:	Standard fabric washing program, suitable to wash cotton fabric. Washing is done once, twice for rinsing and the spin time is a bit long.
JEANS:	Suitable to wash heavily-stained/thick clothes.
BLANKET:	The wash time is longer, the water action stronger, so the washing effect is better.
HEAVY WASH:	heavily-stained/thick clothes.

# OPERATION

## ■ Recommended Detergent Amount

Rated capacity(kg)	Manual Water Level Setting	Detergents		Softener	
	8kg	Powder	Liquid	Normal type	Concentrated type
8kg	58L (8gear)	Approx. 50g - 90g	Approx. 30mL - 45mL	Approx. 55mL - 70mL	Approx. 12mL - 23mL
6kg	49L (6gear)	Approx. 30g - 50g	Approx. 20mL - 30mL	Approx. 36mL - 55mL	Approx. 12mL - 18mL
3kg	33L (4gear)	Approx. 11g - 30g	Approx. 10mL - 20mL	Approx. 18mL - 36mL	Approx. 9mL - 12mL
1kg	18L (2gear)	Approx. 11g	Approx. 10mL	Approx. 18mL	Approx. 9mL
	Blanket	— — —	Approx. 45mL	Approx. 70mL	Approx. 23mL



### Note!

- This is just for reference.

# MAINTENANCE

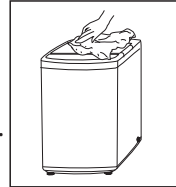
## ■ Cleaning And Care

### ⚠ Warning!

- Before your maintenance starts, please unplug the machine and close the tap.

## ■ Cleaning the cabinet

Proper maintenance of the washing machine can extend its working life. The surface can be cleaned with diluted non-abrasive neutral detergents when necessary. If there is any water overflow, use a wet cloth to wipe it off immediately. No sharp items are allowed.



### 📌 Note!

- Formic acid and its diluted solvents or equivalent are forbidden, such as alcohol, solvents or chemical products, etc.

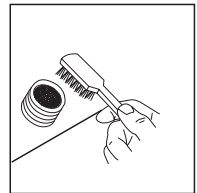
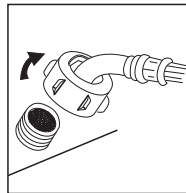
## ■ Cleaning the inlet filter

### 📌 Note!

- Inlet filter must be cleaned if pressure of water from the inlet drops.

Washing the filter in the washing machine:

- Water inlet valve filter cleaning.
  1. Screw off the inlet hose from the back of the machine.
  2. Pull out the filter with a pair of long nose pliers and reinstall it back after being washed.
  3. Use a brush to clean the filter.
  4. Reconnect the inlet hose.



- Lint filter cleaning

1. There is a built-in lint filter in your washer. It can help to collect lint during washing cycle.
2. It is suggested to clean the lint filter every 10 cycles.
3. Take it out and clean the filter with water. Then place it back into the washer.



# MAINTENANCE

## ■ Trouble Shooting

If the appliance does not start or it stops during the operation, initially try to find a solution to the problem based on the table below. Otherwise, contact the service center.

Description	Inspection Items
No washing	If the power is off . If the water volume reach the required water level.(The washer will not work if the water amount does not reach the required water level) If it is set to "Preset" washing mode. (It will only start to work until the reservation time is reached)
No water flows in	If the power is off or the fuse is burned out. If the water supply is cut off or the water pressure is too low. If the inlet hose is properly connected and the water tap is opened. If the filtering screen of inlet valve is blocked by dirt. If the "Start / Hold" button is pressed after the power switch is pressed.
Abnormal draining	If the end of the water drain hose is placed very high. If the end of water drain hose is immersed in and blocked by a pool of water .
Abnormal spin	If the glass lid is not closed. If most of the clothing are at one side of the drum or if too many clothes are loaded in the machine. If the washer is not placed in stable condition or it is placed an inclined state. (The ground is not flat).

Description	Reason	Solution
E1	Alarm for abnormal water filling.	Check if the water tap is opened or not.
E2	Alarm for water unfinished water draining	Check if the end of the drain hose is placed too high, if it is immersed in and blocked.
E3	Alarm for lid that is not closed before wash and spin.	Close the lid, press "Start" button.
E4	Unbalanced wash load during spinning	Evenly distribute the clothes in the drum by hand.
E7-1 E7-2 E7-3 E7-4 E7-5	Abnormal behavior with dangerous fault. (brake wires,brake,sensors)	E7-1 E7-2 E7-3 E7-4 E7-5 appears after pressing the power button,Please call for service. If E7-1 E7-2 E7-3 E7-4 E7-5 appears during the operation , press the power button to stop the machine.
FXX	Others	Try to look for solutions first then call for service, if no solutions work.

### Note!

- After the checking, try to use the appliance again ,If problems persist or the display shows other alarm code again, contact the service center.
- E1-E4 alarm clear on some models need to be stimulated by "Start" button.

# MAINTENANCE

---

## ■ Technical Specifications

Standard Water Pressure | 0.03MPa~0.8MPa

Model	Washing Capacity	Dimension (W*D*Hmm)	Net Weight	Rated Power	Power Supply
AW-M901BT	8.0kg	550x565x930	37kg	450W	220-240V~,50Hz

## ■ Energy efficiency test program:

1. Press the "ON/OFF" switch.
2. Select the "Regular" program(Regular).
3. Adjust washing water level to the highest level "8 gear".
4. Select "Process", go to "(Rinse)", adjust the value by pressing the "Set" button, select Rinse 1 time.
- 5 Select "Process", go to "(Spin)", adjust the value by pressing the " Set" button, select Spin for 9 minutes.
6. Press the start button.

# MEMO

---

MANUFACTURED BY  
TOSHIBA CONSUMER PRODUCTS (THAILAND) CO., LTD.

MADE IN THAILAND