

TOSHIBA

For household use

Toshiba Mechanical Rice Cooker / Warmer Instruction Manual

Model

1.0L Type

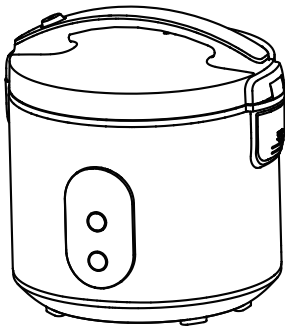
RC-T10JR(S)

RC-T10JH(W)

1.8L Type

RC-T18JR(S)

RC-T18JH(W)



Contents

IMPORTANT SAFEGUARDS	1
PRODUCT SPECIFICATION	2
GETTING STARTED	3
OPERATION INSTRUCTIONS.....	4
PRECAUTIONS	5
TROUBLE SHOOTING	6

- Thank you for purchasing Toshiba rice cooker. All pictures in this manual are subject to material objects, and are only used for function display reference.
- Please read the instruction manual and use it correctly for your own safety. Before using, please read “Safeguards” and “Please follow the instructions”.
- After reading, please keep the instruction manual at a place where any person who is going to use this cooker can find and see it.

IMPORTANT SAFEGUARDS



Caution

When using electrical appliances, basic safety precautions should be followed including the following:



1. This appliance is not intended for use by persons (including children) with reduced physical, sensory or mental capabilities, or lack of experience and knowledge, unless they have been given supervision or instruction concerning use of the appliance by a person responsible for their safety.
2. This appliance is intended to be used in household and similar applications such as:
 - Staff kitchen areas in shops, office and other working environments;



- farm houses;
 - by clients in hotels, motels and other residential type environments;
 - bed and breakfast type environments;
3. If the supply cord is damaged, it must be replaced by a special cord or assembly available from the manufacture or its service agent.
 4. Please turn off and unplug the appliance before cleaning, maintenance or relocation and whenever it is not in use.
 5. Warning: Misuse may cause potential injury.
 6. Warning: Avoid spillage on the connector.



1. This appliance is for household use only. Do not use outdoors.
2. Children should be supervised to ensure that they do not play with the appliance.



3. Do not immerse any part of the appliance in water or other liquid.
4. The heating element surface is subject to residual heat after use, do not touch.

PRODUCT SPECIFICATION

Thank you for purchasing the TOSHIBA rice cooker, please read this instruction manual carefully before using. Keep it cautiously after reading for future reference.

At first use, there might be an odor from plastic, etc. This odor will disappear after using .



Caution

All pictures in this manual are subject to material objects, and are only used for function display reference.

COVERPLATE

Removeable coverplate Non-removeable coverplate

STEAM VALVE

Removeable steam valve from the direction of the unlock icon

Non-removeable steam valve: Be contact with up lid, cant be removed.

RC-T18JH(W) and RC-T18JR(S) series the installation method of the seal ring of the coverplate can follow the diagram

INNER POT

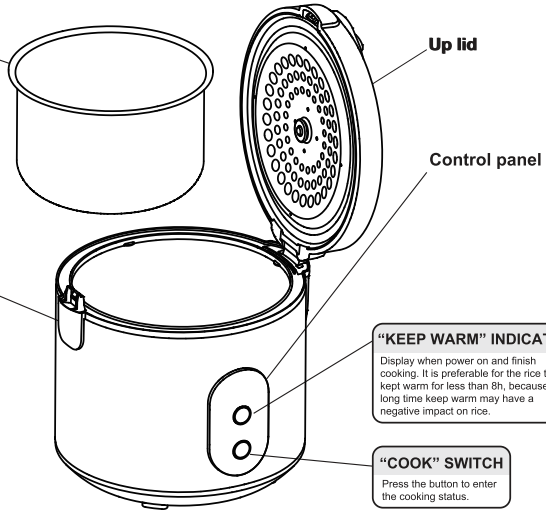
Never heat the inner pot on other stoves to avoid deformation.

Take the inner pot out of the electric rice cooker, wash it with household liquefied detergent and rinse with fresh water and then wipe it dry with soft cloth. Never use a metal brush or other harsh tools to wash in order to avoid damage to the inner pot.

According to frequency of use, the inner pot may be a phenomenon of discoloration or markings, but does not affect the health and use of.

WATER HOLDER

Take out the water holder, pour out the rice water, and replace it after cleaning. Attention to remove the action should be slow to prevent water spills.



Model	Rated Voltage	Rated Power(W)	Cooking Capacity(L)	Cooking Method	Rice Quantity (Cup)
RC-T10JH(W) RC-T10JR(S)	220V 50Hz	500W	1.0	Heating	1-5.5
RC-T18JH(W) RC-T18JR(S)		650W	1.8		2-10
Accessories	Spoon Spatula	Measuring Cup	Power Cord	Steamer	

GETTING STARTED

1. Before using the appliance for the first time, clean the parts of the rice cooker thoroughly. Make sure all the parts are completely dry before you start using the appliance.
2. To prevent the damage of the non-stick coating in the inner pot, use a separate container to wash the rice.
3. Measure the rice using the measuring cup provided. Do not exceed the quantities indicated on the inside of the inner pot.
4. Place the washed rice into the inner pot.
5. Add water to the level indicated on the scale inside the inner pot that corresponds to the number of cups of rice used.
6. Dry the out side of the inner pot.
7. Place the inner pot in the rice cooker.
8. Close the lid of the rice cooker until a 'click' sound is heard.
9. Plug in the power cord into the rice cooker and to the wall socket and switch on the mains.

STEAM FUNCTION (MANUAL CONTROL)

- 1** Add appropriate amount of water into the inner pot.
The amount of water varies according to the quantity of food to be steamed. Ensure that the water level does not exceed the height of the steam tray. Insert the steam tray into the inner pot and place the food on the plate or on the steam tray.
- 2** Press the control lever down to start the cooking. The light indicator will switch to "COOK"

NOTE: To ensure even steaming, the food should be spread out evenly and should not be piled up.

OPERATION INSTRUCTIONS

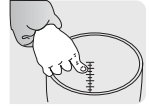
1 Rice measuring and washing

- The measuring cup is mainly used to measure the amount of rice. A flat cup of rice is 0.18L (approx. 150g).
- Do not wash rice directly with the inner pot to avoid scratching its non-stick layer, distortion it due to collision or result in a lower heat efficiency due to poor contact with the electric heating plate.



2 Put washed rice into the inner pot and add water to the corresponding level (e.g., add water to high level "3" if 3 cups of rice are to be cooked), add or reduce the amount of water depending your personal taste highest level.

- To steam food off water, add a proper amount of water lest water overflows the steamer when boiling.



3 Mop up the interior and exterior of the inner pot with dry cloth, place it into the cooker body. Turn the inner pot gently for several times to allow its bottom come into contact with the electric heating plate.

- No foreign matter can be allowed between inner pot and electric heating plate.
- The non-stick coating of inner pot conforms with the standards of food sanitation and harmless to human health.
- Make sure the cover is properly closed, otherwise the cooking effect may be affected.

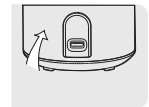


4 Press down the cover until it snaps in place.



5 Cooking

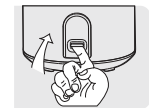
The "WARM" lamp is illuminated after plugging into the outlet. The Rice Cooker are entering the cooking process until you have pressed the "COOK". Otherwise, the Rice Cooker will still in warming process (Please be sure that you have pressed the "Cooking" Otherwise, the Rice Cooker will still in warming process).



6 When cooking is finished, the cooking switch will pop up and a "Click" will be heard. At the same time, the cooking light will go out and keep warm light will go on.

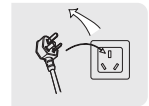
Special Hint:

Rice is best served 15 minutes after cooking.



7 Food steaming. Put the amount of water into inner pot. The amount of water varies according to the food and its quantity (Do not exceed the height of the steam tray).

- Install the steam tray into the pot and place food on the tray.
- Operate the cooker according to the 4,5,6 above said.
- When food steaming is finished, you must turn off the switch button manually (push up). The cooker will automatically keep the food warm until serving.



8 When filling bowl with rice, the attached spoon, not metal spoon, should be used to avoid scuffing the non-sticky coating of inner pot and causing exfoliation of coating at the same time, dry grain of cooked rice should be removed.



9 In order to keep cleanliness and sanitation, please clean up the rice water in water holder after cooking.

PRECAUTIONS

- 1 The inside pot cannot be heated on any other furnace, otherwise it can be deformed easily .
- 2 The cooked rice start to keep warm, it is not suitable for eating immediately and it will more soft and delicious if let it stewing for 15 minutes.
- 3 In order to avoid the cooked rice off flavor, suggest the time of keeping warm don't exceed:JH- don't exceed 8 hours, JR- don't exceed 12 hours.



CLEANNES METHOD

- 1 Take the inner pot out of the electric rice cooker. Wash it with mild dish soap and warm water, rinse it with fresh water, and then wipe it dry with a soft cloth.
* Do not use a metal brush or other abrasive tools on the non-stick surface, as they may damage the coating.
- 2 Take the water holder down and spill over water or soup and then instal it after washing clean.
- 3 The grain of cooked rice or other sundries may attach to electric hot tray, the fine sand papercan be used for grind them away and wipe it with soft cloth to keep the dully contact between inner pot and electric heating plate.



SAFE NOTE

- 1 The earthed wall socket should be used and the plug must be inserted reliably. Do not use multipurpose socket while using other electric appliance at the same time.
- 2 When do not use it, please pull the power cord out of the socket.
- 3 After insert the power cord into socket, it must be inserted death; otherwise the element may be burnt out by poor connection
- 4 The electric rice cooker can not placed on unstable, wet place fire otherwise it will be damaged or go wrong.
- 5 When cooking, the steam port is extraordinary hot, do not close face or hands to avoid scald.
- 6 The body and cover of electric rice cooker cannot be washed water or in water, otherwise the insulator will be damaged become dangerous.
- 7 If the power cord is damaged, it must be changed with new power cord produced by the manufacturer.
- 8 Do not let a child operate the product alone. Put it out of the reach babies to avoid electric shock, scald and other dangerous accid

TROUBLE SHOOTING

No.	Malfunction		Causes	Solution
1	The light is off.	Heating plate is not hot.	Circuit of electric rice cooker is not connected to power supply.	Inspect whether the switch, plug and socket connector, fuse and leading wire of power supply are in good condition and insert the plug reliably
		Heating plate is hot.	1. Wiring connection of indicator light has loosened. 2. Indicator light is damaged.	It should be sent to an uthorized service department for maintenance.
2	The light is on.	Heating plate is not hot.	1. Wiring in the middle has loosened. 2. Electric-thermal tube has burnt out.	
3	Cooked rice is crude or time of cooking is too long.		1. Cooking time is insufficient. 2. Heating plate is deformed. 3. Inner pot is declined and one side is hanging in the air. 4. There is foreign matter between inner pot and heating plate. 5. Inner pot is deformed.	1. Cook rice according to required conditions. 2. The fine sand paper can be used for correcting slight deformation but the severely deformed one should be sent to maintenance department for replacement. 3. Turn the inside pot lightly to make it return to normal. 4. Clean it up with fine sand pape 5. Send to designated service department.
4	Cook rice burnt or cannot keep warm automatically		1. The keys of cooking rice and lever link gear is not working. 2. The steel magnet temperature limiter is out of work. 3. The temperature controller is burnt out wiring of it is loosened.	It should be sent to an uthorized servicedepartment for maintenance.
5	Overflow		1. Installation of steam valve is pour. 2. Steam reflux valve is deformed or has foreign matter.	1. Reinstall it according to installation method in this instruction manual. 2. Wash it or remove foreign matter as required.

SPECIAL STATEMENT

Addition: Any technical improvements shall be placed in the revised manual without notice; for any changes in appearance and color, those of the actual product shall prevail.

All the contents in this material have been subjected to carefully check.

For any mistake and omission in printing or misunderstanding the contents, the TOSHIBA keeps the right of interpretation.