

## 2 IN 1 FAN WITH TRUE HEPA FILTER



SmartHome



Download the app  
& activate product

# USER MANUAL

MSAF421DWW

Warning notices: Before using this product, please read this manual carefully and keep it for future reference. The design and specifications are subject to change without prior notice for product improvement. Consult with your dealer or manufacturer for details. The diagram above is just for reference. Please take the appearance of the actual product as the standard.

## THANK YOU LETTER

Thank you for choosing Midea! Before using your new Midea product, please read this manual thoroughly to ensure that you know how to operate the features and functions that your new appliance offers in a safe way.

# CONTENTS

<b>THANK YOU LETTER</b>	01
<b>SAFETY INSTRUCTIONS</b>	02
<b>SPECIFICATIONS</b>	06
<b>PRODUCT OVERVIEW</b>	07
<b>PRODUCT INSTALLATION</b>	08
<b>OPERATION INSTRUCTIONS</b>	10
<b>APP SETUP AND OPERATION</b>	12
<b>CLEANING AND MAINTENANCE</b>	13
<b>USER SERVICING INSTRUCTIONS</b>	15
<b>TROUBLESHOOTING</b>	16
<b>TRADEMARKS, COPYRIGHTS AND LEGAL STATEMENT</b>	17
<b>DATA PROTECTION NOTICE</b>	18

# SAFETY INSTRUCTIONS

## Intended Use

The following safety guidelines are intended to prevent unforeseen risks or damage from unsafe or incorrect operation of the appliance. Please check the packaging and appliance on arrival to make sure everything is intact to ensure safe operation. If you find any damage, please contact the retailer or dealer. Please note modifications or alterations to the appliance are not allowed for your safety concern. Unintended use may cause hazards and loss of warranty claims.

## Explanation of Symbols



### **Danger**

This symbol indicates that there are dangers to the life and health of persons due to extremely flammable gas.



### **Warning of electrical voltage**

This symbol indicates that there is a danger to life and health of persons due to voltage.



### **Warning**

The signal word indicates a hazard with a medium level of risk which, if not avoided, may result in death or serious injury.



### **Caution**

The signal word indicates a hazard with a low degree of risk which, if not avoided, may result in minor or moderate injury.



### **Attention**

The signal word indicates important information (e.g. damage to property), but not danger.



### **Observe instructions**

This symbol indicates that a service technician should only operate and maintain this appliance in accordance with the operating instructions.

Read these operating instructions carefully and attentively before using/commissioning the unit and keep them in the immediate vicinity of the installation site or unit for later use!

## **⚠ CAUTION**

- Read rules for safe operation and instructions carefully.
- This appliance is not intended for use by persons (including children) with reduced physical, sensory or mental capabilities, or lack of experience and knowledge, unless they have been given supervision or instruction concerning use of the appliance by a person responsible for their safety. Children should be supervised to ensure that they do not play with the appliance.
- Never insert fingers, pencils, or any other object through the grille when fan is running.
- Disconnect fan when moving from one location to another.
- Be sure fan is on a stable surface when operating to avoid overturning.
- Keep electrical appliances out of reach from children or infirm persons. Do not let them use the appliances without supervision.
- Household use only.

## **⚠ WARNING**

- If the supply cord is damaged, it must be replaced by manufacturer or its service agent or a similarly qualified person in order to avoid a hazard.
- To protect against the risk of electrical shock, do not immerse the unit, cord or plug in water or other liquid.
- When the appliance is not in use and before cleaning, unplug the appliance from the outlet.
- When the fan was assembled, the rotor blade guard shall not be taken off anymore.
- Ensure that the fan is switched off from the supply mains before removing the guard.
- The appliance is only to be used with the power supply unit provided with the appliance.

- This appliance has a polarized plug (one blade is wider than the other). To reduce the risk of electric shock, this plug is intended to fit in a polarized outlet only one way.
- If the plug does not fit fully in the outlet, reverse the plug. If it still does not fit, contact a qualified electrician. Do not attempt to defeat this safety feature.
- **WARNING**—To reduce the risk of fire or electric shock, do not use this fan with any solid-state speed control device.
- This product employs overload protection (fuse). A blown fuse indicates an overload or short-circuit situation. If the fuse blows, unplug the product from the outlet. Replace the fuse as per the user servicing instructions (follow product marking for proper fuse rating) and check the product. If the replacement fuse blows, a short-circuit may be present and the product should be discarded or returned to an authorized service facility for examination and/or repair.
  - a) “Do not operate any fan with a damaged cord or plug. Discard fan or return to an authorized service facility for examination and/or repair.”
  - b) “Do not run cord under carpeting. Do not cover cord with throw rugs, runners, or similar coverings. Do not route cord under furniture or appliances. Arrange cord away from traffic area and where it will not be tripped over.”
- Do not leave the fan running unattended.
- This product complies with the maximum allowable concentration of ozone of 0.050 parts per million by volume (ppmv) in a 24-h period.

- This device complies with Part 15 of the FCC Rules. Operation is subject to the following two conditions:  
(1) this device may not cause harmful interference, and  
(2) this device must accept any interference received, including interference that may cause undesired operation.
  - NOTE: This equipment has been tested and found to comply with the limits for a Class B digital device, pursuant to Part 15 of the FCC Rules. These limits are designed to provide reasonable protection against harmful interference in a residential installation. This equipment generates uses and can radiate radio frequency energy and, if not installed and used in accordance with the instructions, may cause harmful interference to radio communications. However, there is no guarantee that interference will not occur in a particular installation.
  - Please note that any changes or modifications of this product not expressly approved by the party responsible for compliance could void the user's authority to operate the equipment.
  - If this equipment does cause harmful interference to radio or television reception, which can be determined by turning the equipment off and on, the user is encouraged to try to correct the interference by one or more of the following measures:
    - Reorient or relocate the receiving antenna.
    - Increase the separation between the equipment and receiver.
    - Connect the equipment into an outlet on a circuit different from that to which the receiver is connected.
    - Consult the dealer or an experienced radio/TV technician for help.
- Midea America Corp.  
Parsippany, NJ 07054  
TEL : 1-866-646-4332

# SPECIFICATIONS

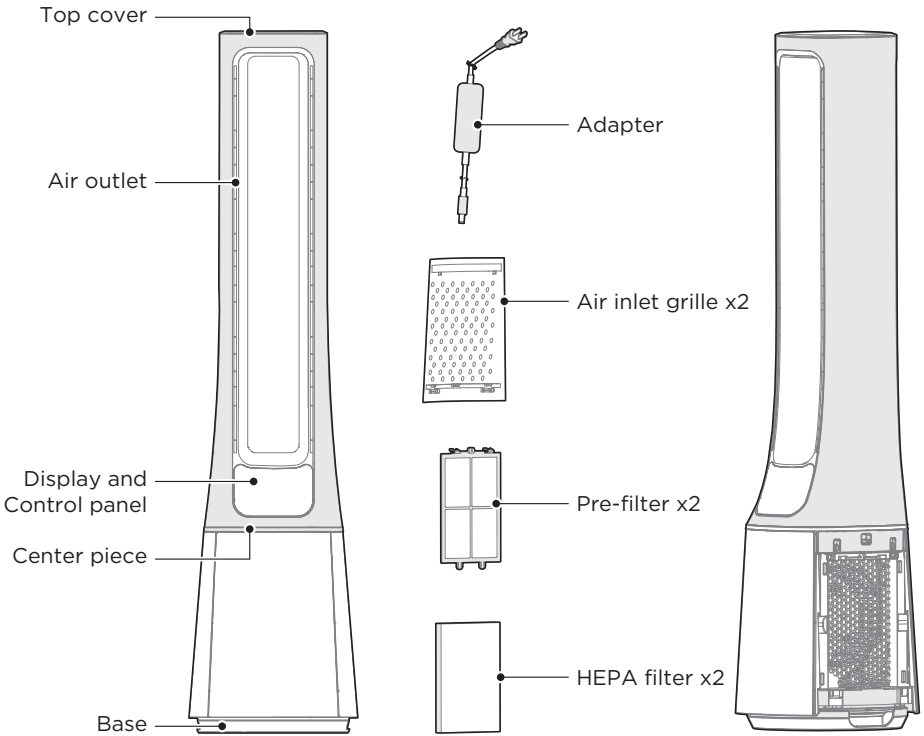
<b>Product Model</b>	<b>MSAF421DWW</b>
Working Voltage	24V $\overline{=}$
Rated Current	1.2A
Noise	$\leq$ 61dB

---

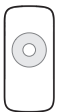
<b>Parts</b>	<b>Adapter</b>
Input	100-240V- 50/60Hz 1.5A
Output	24V $\overline{=}$ 1.5A

# PRODUCT OVERVIEW

## Part Name



## Parts List



Remote Controller x1



Manual x1



Warranty card x1



Adapter x1

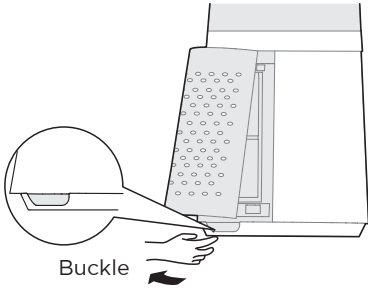
### NOTE

All the pictures in this manual are for explanation purpose only. Any discrepancy between the real object and the illustration in the drawing shall be subject to the real subject.

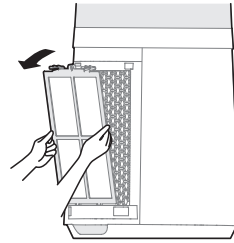
# PRODUCT INSTALLATION

## Installation Procedures

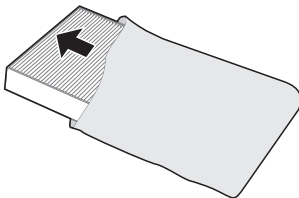
1 Remove the air inlet grille.



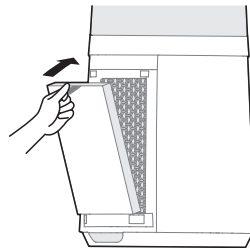
2 Take out the pre-filter: press the raised part on both sides to pull it outwards, and take out the pre-filter.



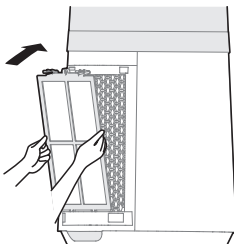
3 Remove the protective film of the filter.



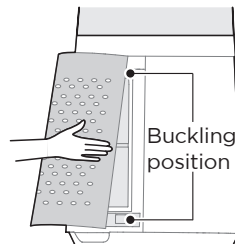
4 Install the HEPA filter. It is recommended to clean the filter every two weeks and replace the filter every six months (The cleaning and replacement cycle can be adjusted according to the use environment).



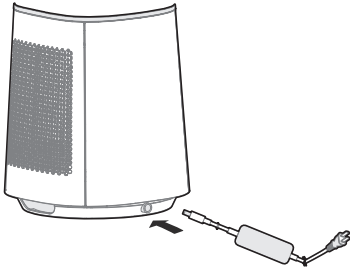
5 Install the pre-filter: align the slot position at the bottom, and buckle up the upper U-shaped buckle.



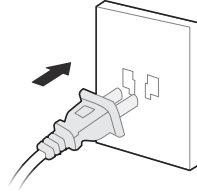
6 Install the air inlet grille: align the upper two buckles and press them tightly, then press the two sides at lower part, slowly and gently buckle the air inlet grille.



**7** Install the adapter, Tighten the plug with the socket position of the base.

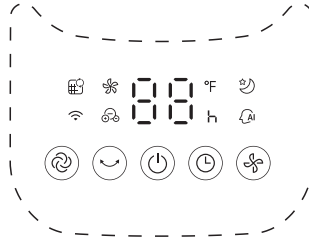


**8** Plug power supply.



# OPERATION INSTRUCTIONS

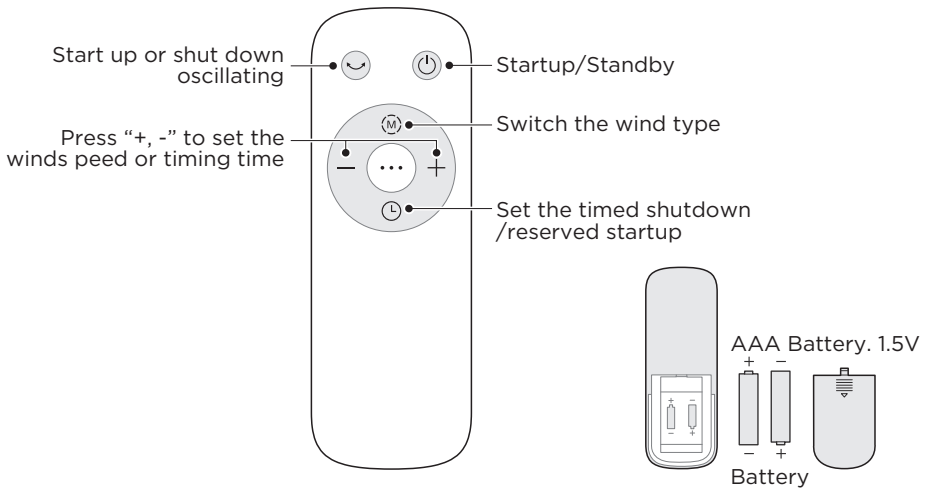
## Control Panel Operations



	Function description
	<ul style="list-style-type: none"> <li>Startup/Standby, long press the on button, “” indicator lights up.</li> </ul>
	<ul style="list-style-type: none"> <li>Touch this button to switch the wind mode among normal, plasmacluster, sleep and AI smart.(When the filter replacement reminder light is on, press and hold this button to turn off the reminder light)</li> </ul>
	<ul style="list-style-type: none"> <li>Touch this button to start/stop the swing.</li> </ul>
	<ul style="list-style-type: none"> <li>Touch this button to switch the wind speed (cycles among level 1-2-3-•••-10-1-2).</li> </ul>
	<ul style="list-style-type: none"> <li>Schedule to shut down in the power-on state, and schedule to start up in the standby state.</li> <li>Touch this button to set the timer (the display cycles among 0-1-2-•••-12-0h); 0h means that the timer is canceled.</li> </ul>
	<ul style="list-style-type: none"> <li>Filter replacement reminder icon; when the icon “” stays on, the filter needs to be replaced.</li> </ul>
	<ul style="list-style-type: none"> <li>In AI smart wind mode, the indicator light “” is on, and the wind power is automatically adjusted according to changes in ambient temperature.</li> </ul>
	<ul style="list-style-type: none"> <li>This indicator light is on in sleep wind mode.Start the sleep wind function, and the fan automatically adjusts the level according to the program; there are three levels: 1, 2 and 3; you can adjust the level of the sleep wind by pressing the wind speed button.</li> </ul>
	<ul style="list-style-type: none"> <li>Displays the wind speed level or set timer, and displays the temperature in the wind mode.</li> </ul>
	<ul style="list-style-type: none"> <li>This indicator light is on in ion wind mode.</li> <li>In this mode, plasmacluster is turned on, and level 1-10 wind has plasmacluster.</li> </ul>
	<ul style="list-style-type: none"> <li>This indicator light is “”.Long press the switch button for 3 seconds to start matching or disconnect “”.</li> <li>The lights are on, “” is connected.</li> <li>The lights are blinking and the “” is disconnected or being connected.</li> </ul>

## Remote Control

- The remote control should be normally used within 5 meters of the front of the product and 30 degrees of the deviation angle.
- The battery contains many heavy metals, acids and bases, etc., which may threaten human's health. Waste batteries should be recycled separately.



### NOTE

Use manganese or alkaline batteries of type "AAA". DO NOT use rechargeable batteries.

## Additional Functions

### • Forced shutdown

There is no operation during the running of the fan, after 15 hours of continuous operation, the fan will be forced to shut down auto-matically.

### • Intelligent memory

When the fan is turned off or powered off, it will run in the state before turning off or power off when the power is powered on again (the timing function is not memorized).

### • Screen-off function

In case of no operation for 30 seconds during normal operation, the indicator light on the body will be automatically off, but the fan will continue to operate. Press the ON/OFF button to turn off the fan when the screen is off, and press the other button to restore display.

# APP SETUP AND OPERATION

## Download the SmartHome app

On an app market (Google Play Store, Apple App Store), search for **SmartHome** and find the SmartHome app. Download and install it on your phone. You can also download the app by scanning the QR code below.



## Register and log in

Open the SmartHome app, and create a new account to start (you can also register through a third-party account). If you already have an existing account, use the account to log in.



## Connect your devices to SmartHome

- 1 Make sure your mobile phone is connected to your home's wireless network. If it is not, go to Settings and enable wireless networks and Bluetooth.
- 2 Please power on your devices.
- 3 Open SmartHome app on your phone.
- 5 If no message appears, select "+" on the page and select your device in the list of nearby devices available. If your device is not listed, please add your device manually by the device category and device model.



- 4 If a message of "Smart devices discovered nearby" appears, tap to add.



- 6 Connect your device to the wireless network according to instructions in the app. If the connection fails, please follow the instructions provided by the app to continue with the operation.



## NOTE

- Make sure your devices are powered on.
- Keep your mobile phone close enough to your device when you are connecting your device to the network.
- Connect your mobile phone to the wireless network at home, and make sure you know the password of the wireless network.
- Check if your wireless router supports 2.4 GHz band and turn it on. If you are not sure whether the router supports 2.4 GHz band, please contact the router manufacturer.
- The device cannot connect to the wireless networks that requires authentication. These networks usually appear in public areas such as hotels, restaurants, etc. Please connect to a wireless network that does not require authentication.
- Turn off the WLAN+ (Android) or WLAN Assistant (iOS) function of your mobile phone when connecting your device to the network.
- If your device was connected to a wireless network before but needs to reconnect, please tap "+" on the app Home page, and add your device again by the device category and model according to the instructions in the app.

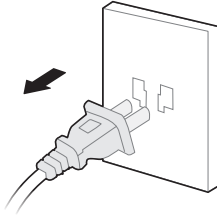
# CLEANING AND MAINTENANCE

The fan requires minimal maintenance. Do not try to fix it by yourself. Refer it to qualified service personnel if service is needed.

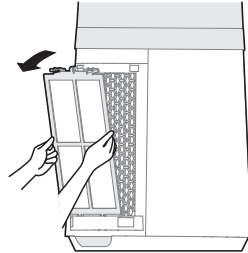
1. Before cleaning and assembling, unplug the fan power.
2. To ensure adequate air circulation to the motor, keep vents at the rear of the motor free of dust. Do not disassemble the fan to remove dust.  
Please wipe the exterior parts with a soft cloth soaking a mild detergent.
3. Do not use any abrasive detergent or solvents to avoid scratching the surface.
4. Do not use any of the following as a cleaner: gasoline, thinner.
5. Do not allow water or any other liquid entering into the motor housing or interior parts.
6. Be sure to unplug from the electrical supply source before cleaning.
7. Plastic parts should be cleaned with a soft cloth moisten with mild soap Thoroughly remove soapsuds with dry cloth.

## Pre-filter Cleaning

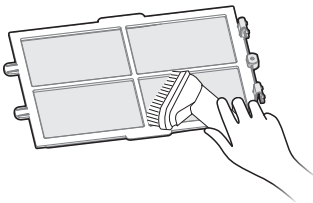
1 Unplug the power cord.



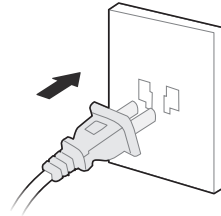
2 Take out the filter.



3 Remove the dust with vacuum cleaner.

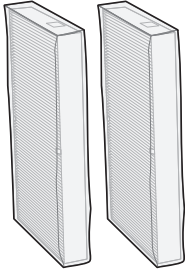


4 Install the machine in reverse order and plug power supply.



## Filter Replacement

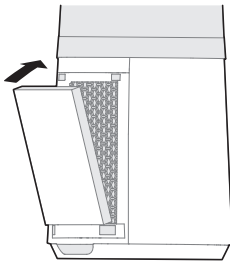
- 1** Filter model: FQ150CJ-2  
(including 2 sets).



- 2** When the indicator light for replacement of filter is on, the prompt that reminds you of filter replacement will appear. If it is not replaced in time, the prompt will appear during each startup.



- 3** Replace a new filter.

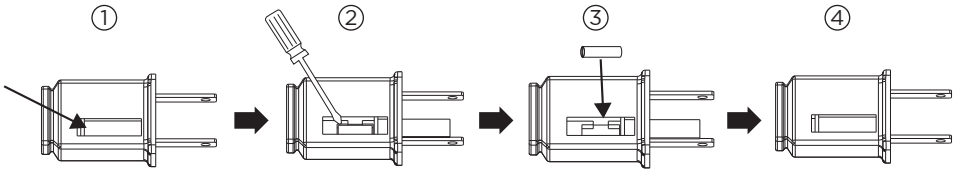


- 4** Long press the mode button for 3 seconds to turn off the indicator light for filter replacement.



# USER SERVICING INSTRUCTIONS

- a) Grasp plug and remove from the receptacle or other outlet device. Do not unplug by pulling on cord.
- b) Open fuse cover. Slide open fuse access cover on top of attachment plug towards blades.(Fig. ①)
- c) Remove fuse carefully. Insert the tip of your tool into fuse slot(close with the terminal), then pry the fuse gradually and slowly, but not overexert. If you feel tight, you can try it at several times and pry the fuse little by little. When one side of the fuse has been pried, then you can get the fuse out entirely.(Fig. ②)
- d) Risk of fire. Replace fuse only with 2.5 Amp, 125 Volt fuse.(Fig. ③)
- e) Close fuse cover. Slide close the fuse access cover on top of attachment plug.(Fig. ④)
- f) Risk of fire. Do not replace attachment plug. Contains a safety device(fuse)that should not be removed. Discard product if the attachment plug is damaged.
- g) When the fan suddenly does not work during normal operation, please check whether it is a problem with the fuse.



## NOTE


- When you replace the fuse, please don't operate suddenly or overexert, or else the product will be damaged or cause accident.
- When you feel it hard to be operated, please make sure you have got the right way.

# TROUBLESHOOTING

Operation of your appliance can lead to errors and malfunctions. The following tables contain possible causes and notes for resolving an error message or malfunction. It is recommended to read the table below carefully in order to save your time and money that may cost for calling to the service center.

<b>Problem</b>	<b>Cause</b>	<b>Solution</b>
The machine does not work properly after installed	• The power cable is not plugged in or has poor contact.	Make sure the plug is properly inserted into the socket.
	• The switch on the body is not turned on.	Turn on the switch on the body.
The remote does not work	• The battery needs replacing.	Replace the battery.
	• The remote is being used more than 5m away from the fan.	Use the remote closer to the fan and make sure it is pointing directly at the display panel.

# TRADEMARKS, COPYRIGHTS AND LEGAL STATEMENT

 Midea logo, word marks, trade name, trade dress and all versions there of are valuable assets of Midea Group and/or its affiliates (“Midea”), to which Midea owns trademarks, copyrights and other intellectual property rights, and all goodwill derived from using any part of an Midea trademark. Use of Midea trademark for commercial purposes without the prior written consent of Midea may constitute trademark infringement or unfair competition in violation of relevant laws.

This manual is created by Midea and Midea reserves all copyrights thereof. No entity or individual may use, duplicate, modify, distribute in whole or in part this manual, or bundle or sell with other products without the prior written consent of Midea.

All the described functions and instructions were up to date at the time of printing this manual. However, the actual product may vary due to improved functions and designs.

# DATA PROTECTION NOTICE

For the provision of the services agreed with the customer, we agree to comply without restriction with all stipulations of applicable data protection law, in line with agreed countries within which services to the customer will be delivered, as well as, where applicable, the EU General Data Protection Regulation (GDPR).

Generally, our data processing is to fulfil our obligation under contract with you and for product safety reasons, to safeguard your rights in connection with warranty and product registration questions. In some cases, but only if appropriate data protection is ensured, personal data might be transferred to recipients located outside of the European Economic Area.

Further information are provided on request. You can contact our Data Protection Officer via [MideaDPO@midea.com](mailto:MideaDPO@midea.com). To exercise your rights such as right to object your personal data being processed for direct marketing purposes, please contact us via [MideaDPO@midea.com](mailto:MideaDPO@midea.com). To find further information, please follow the QR Code.

**Midea**

*make yourself at home*



[www.midea.com](http://www.midea.com)

© Midea 2022 all rights reserved