

Warranty

This product is warranted to the retail customer for 90 days from date of retail purchase, against defects in material and workmanship.

WHAT IS COVERED

- Replacement parts and labour.
- Transportation charges to customer for the repaired product.

WHAT IS NOT COVERED

- Damage caused by abuse, accident, misuse, or neglect.
- Transportation of the unit or component from the customer to Koolatron.

IMPLIED WARRANTIES

Any implied warranties, including the implied warranty of merchantability are also limited to the duration of 90 days from the date of retail purchase.

WARRANTY

Keep the original, dated, sales receipt with this manual.

WARRANTY AND SERVICE PROCEDURE

If you have a problem with your unit, or require replacement parts, please telephone the following numbers for assistance:

North America 1-800-265-8456

Koolatron has Master Service Centres at these locations:
U.S.A. - 4330 Commerce Dr., Batavia, NY 14020-4102

Canada - 139 Copernicus Blvd., Brantford, ON N3P1N4

A Koolatron Master Service Centre must perform all warranty work.



Programmable 5-meal Pet Dish



www.koolatron.com

©2020 Koolatron, Inc. All rights reserved.

All specifications are subject to change without notice.

H1S310

3/2020 - v1

Please Read These Instructions Carefully Before Use!

PD07
User Manual

SPECIFICATIONS

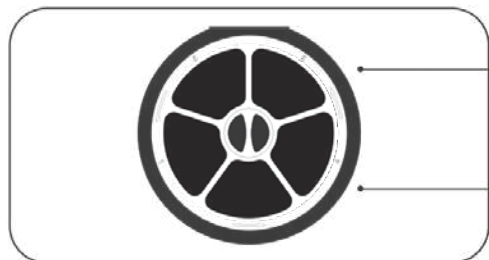
- Programming: 1 to 5 meals per day
- Dimension : L331mm x W323mm x H83mm
- Capacity: 1.6 Liter (around 1.6 lbs dry food, or 2 lbs wet food)
- Weight: 1.4 kg (without batteries & food)
- Power: Require 3 “D” batteries (not included)
Adapter 5V DC 1A with USB cable (not included)

KEY FEATURES



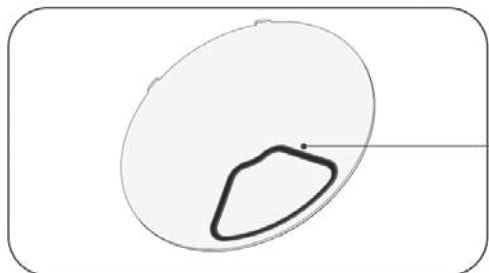
Humanized design, easy programming

Voice recording/play at the programmed meal time



Five separate large food compartments for dry or wet food

Dual power supply: battery and power adapter

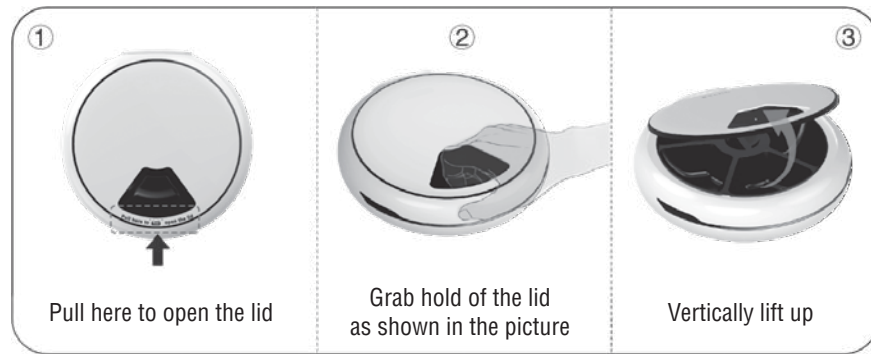


Soft rubber sealing for food preservation

INSTALLATION

1. Twist the lid as picture showing to open it.
After filling in the food, place lid and twist to lock lid into place.

To open the lid:

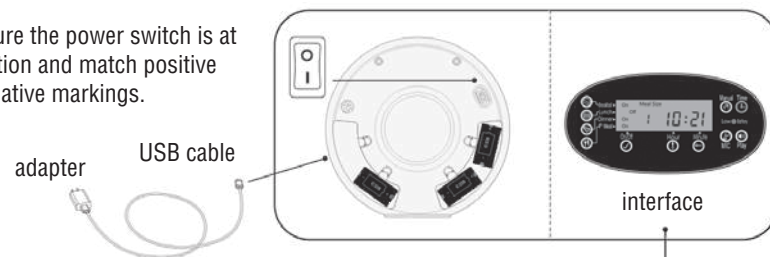


To lock the lid:



2. It works with AC adapter and 3 “D” batteries as an optional back up power. If you do not want to use power adaptor, you can install and use only batteries as power source (3 new “D” alkaline batteries). **NOTE** Batteries, USB cable and power adapter are not included.

Make sure the power switch is at “I” location and match positive and negative markings.

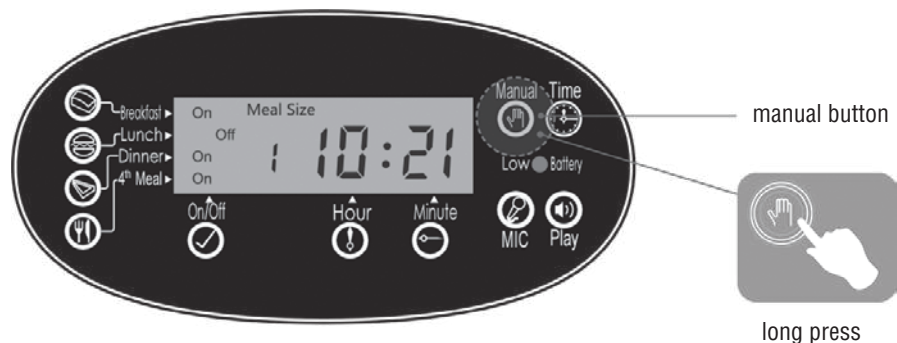


3. Set the feeder as per the following instruction.

OPERATION

1. MANUAL TESTING

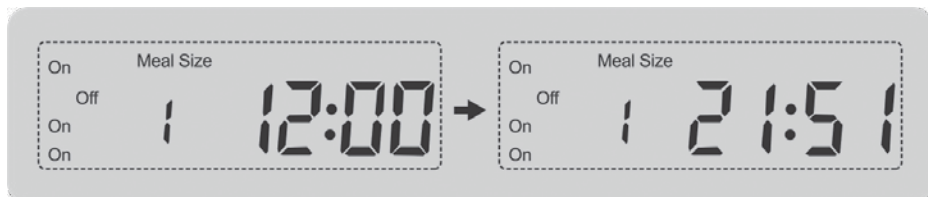
- Press “Manual” button for 3 seconds. If rotor rotates 1 portion, it means the machine has no problem. You can also use this feature to feed manually.



2. CURRENT TIME SETTING

- Keep pressing the “Time” button and simultaneously click the “Hour” button, then “Minute” button to set the right time.

For example: Current time is 21:51 in the illustration below



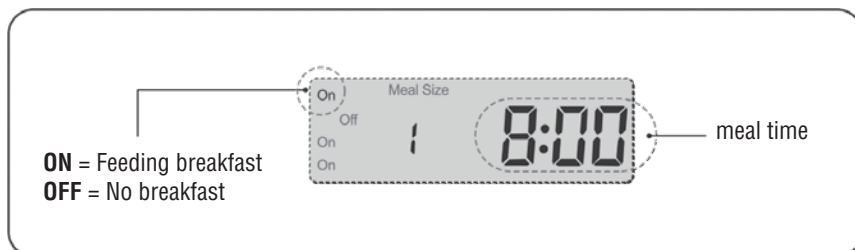
3. BREAKFAST SETTING

• To set breakfast ON or OFF

Keep pressing the “Breakfast” button and simultaneously press the “On/Off” button.

• To set breakfast time

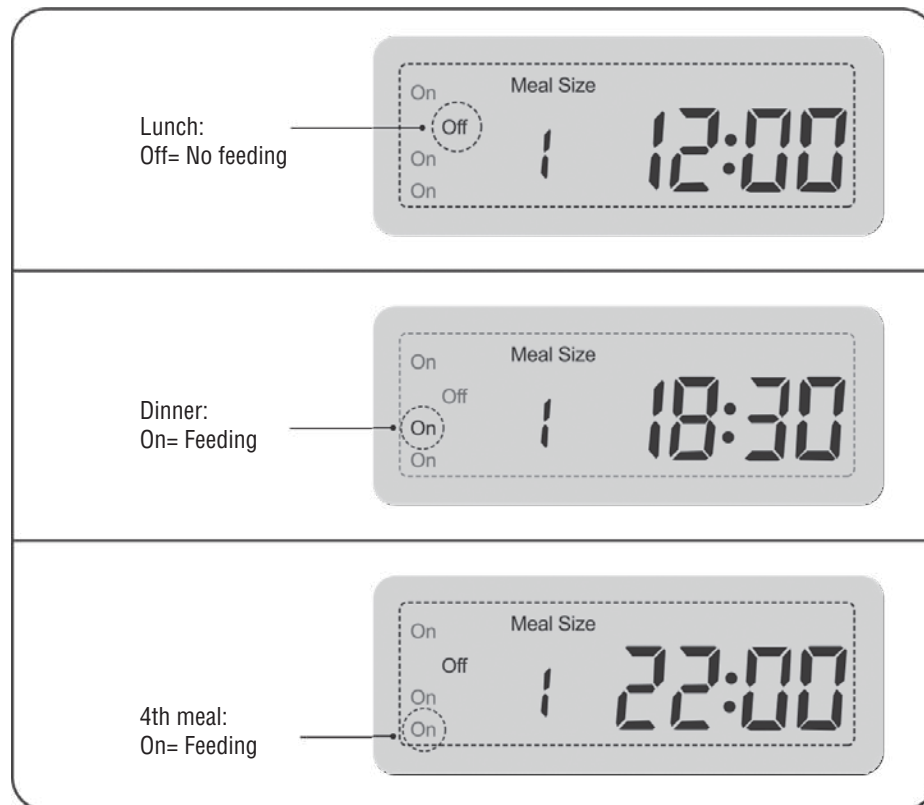
Keep pressing the “Breakfast” button and simultaneously press the “Hour” button, then the “Minute” button.



OPERATION (cont.)

4. Setting Lunch, Dinner or 4th Meal

- As above, press and hold “Lunch” and simultaneously press the “On/Off” button to set or not lunch. Press and hold “Dinner” and simultaneously press the “On/Off” button to set or not dinner. Same goes with 4th meal.



5. Voice Recording and Play (Figure 5-1)

• Recording

Keep pressing “MIC” button until LCD screen flashes, then record your voice. You can say “Bobby, time for eating” to the microphone, release the button after recording.

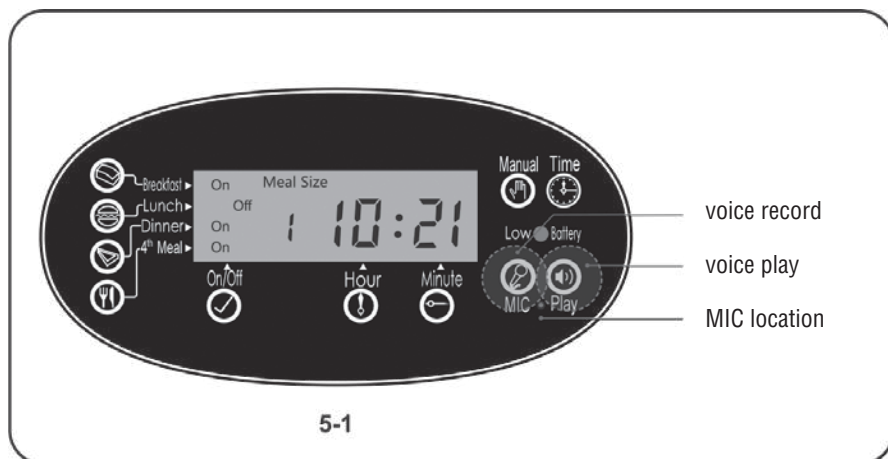
• Cancel Recording

Keep pressing “MIC” button until LCD screen flashes, release the button without saying anything.

• Play Your Recording

Keep pressing “Play” button until LCD screen flashes to replay your recording. The played voice is very low for humans, but the pet’s hearing is more sensitive than yours, so the voice should not be too loud.

OPERATION (cont.)



CLEANING

1. Disassemble the lid and food tray.
2. Hand clean these parts in warm soapy water, then dry them with a soft cloth.

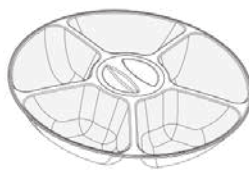
WARNING! Base unit should not be submerged in water at any time, it will damage electronic components and void the warranty.



The lid is washable.



WARNING! Base unit should not be submerged in water



Food tray is washable.

TROUBLE SHOOTING

• The “Low battery” light is flashing.

Replace the old batteries with 3 new “D” alkaline batteries. Normally 3 new “D” alkaline batteries can last around 1 year.

WARNING!

- Requires three “D” batteries. Batteries NOT included. Use alkaline batteries only.
- Estimated life of one set of batteries is one year.
- Keep fingers and hands clear of rotating cover.
- Always turn unit off before cleaning.
- Always turn unit off before adding food.
- Always turn unit off before removing lid or food tray.
- Check the low battery light frequently to be sure the feeder has power.
- Check the level of food frequently to be sure the feeder is dispensing properly.

IMPORTANT NOTES

1. The **Low Voltage** indicator is on the right side of the control panel (**Low battery**). Before leaving home or traveling, you should check to see if the low voltage light is on, if the unit is making a sound or if the lights are on or flashing when food is dispensed. If so, please replace the batteries to avoid starving your pet.
2. Do not put your fingers into the machine at any time.
3. Power switch. The power switch is located at the bottom of the product. If unit is shut down for more than 10 seconds, the unit will be restored to factory default settings.
4. This product uses three “D” batteries. (alkaline batteries can last around 1 year.)

NOTE

- The old batteries should be dealt with according to the local regulations (familiarize yourself with the environmental protection law).
- When the feeder is not used for a long time, remove the battery to prevent the electrolyte from flowing out.
- 5. If you have any questions, please contact the dealer or manufacturer.

FREQUENTLY ASKED QUESTIONS

1. My pet feeder discharges inaccurately.

If after you use it for a period of time, this problem appears, this usually indicates that the battery voltage is too low. Replace batteries.

2. My feeding device functions abnormally or the screen fades in an out.

If this problem appears, this usually indicates that the battery voltage is too low. Replace the batteries.

3. How do I view the parameters that I set?

In the following order, press the breakfast button, lunch button, dinner button and the fourth meal button so you can view the parameters you set. If you want to change the parameters, please re-set the unit. Please note that if you replace the batteries owing to low voltage, you will need to reprogram the feeder.



WARNING! This product contains chemicals known to the State of California to cause cancer, and birth defects or other reproductive harm. www.P65Warnings.ca.gov