

EN User Manual | Freezer



Welcome to our family

Thank you for bringing Frigidaire into your home! We see your purchase as the beginning of a long relationship together.

This manual is your resource for the use and care of your product. Please read it before using your appliance. Keep it handy for quick reference. If something doesn't seem right, the troubleshooting section will help you with common issues.

FAQ, helpful tips and videos, cleaning products, and kitchen and home accessories are available at <http://www.frigidaire.com>.

We are here for you! Visit our website, chat with an agent, or call us if you need help. We may be able to help you avoid a service visit. If you do need service, we can get that started for you.

Let's make it official! Be sure to register your product.

CONTENTS

1. IMPORTANT SAFETY INFORMATION.....	2
2. FEATURES.....	5
3. INSTALLATION.....	6
4. DOOR REVERSAL.....	7
5. DOOR HANDLE INSTALLATION.....	9
6. CONTROL PANEL: INTERNAL, CONVERTIBLE.....	9
7. CONTROL PANEL: EXTERNAL, CONVERTIBLE.....	11
8. CONTROL PANEL: EXTERNAL, REFRIGERATOR.....	12
9. STORAGE FEATURES.....	13
10. STORING FOOD AND SAVING ENERGY.....	14
11. CARE AND CLEANING.....	14
12. TROUBLESHOOTING.....	16
13. LIMITED WARRANTY.....	18
14. QUEBEC RIGHT TO REPAIR.....	19

1. IMPORTANT SAFETY INFORMATION

1.1 Keep a record for quick reference

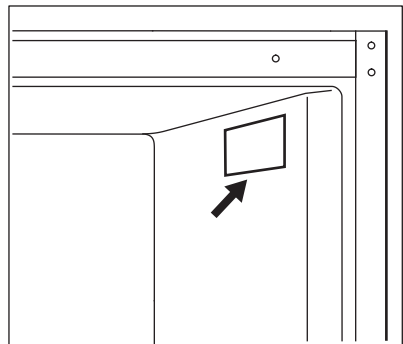
Model number

Serial number

Purchase date

.....

1.2 Serial number location



WARNING!

You must follow these guidelines to ensure that your appliance's safety mechanisms are operating correctly.

1.3 Safety definitions



This is the safety alert symbol. It is used to alert of potential personal injury hazards. Obey all safety messages that follow this symbol to avoid possible injury or death.

DANGER

DANGER indicates an imminently hazardous situation which, if not avoided, will result in death or serious injury.

WARNING!

WARNING indicates a potentially hazardous situation which, if not avoided, could result in death or serious injury.

CAUTION!

CAUTION indicates a potentially hazardous situation which, if not avoided, may result in minor or moderate injury.

IMPORTANT

IMPORTANT indicates installation, operation or maintenance information which is important but not hazard-related.

1.4 Child safety

This appliance is not intended for use by persons (including children) with reduced physical, sensory or mental capabilities, or lack of experience and knowledge, unless they have been given supervision or instruction concerning use of the appliance by a person responsible for their safety.

Destroy or recycle the carton, plastic bags, and any exterior wrapping material immediately after the appliance is unpacked. Children should never use these items to play. Cartons covered with rugs, bedspreads, plastic sheets or stretch wrap may become airtight chambers, and can quickly cause suffocation.

1.5 Important safety instructions

DANGER



DANGER Risk of fire or explosion. Flammable refrigerant used. Do not use mechanical devices to defrost the appliance. Do not puncture refrigerant tubing.

DANGER Risk of fire or explosion. Flammable refrigerant used. To be repaired only by trained service personnel. Use only manufacturer-authorized service parts. Any repair equipment used must be designed for flammable refrigerants. Follow all manufacturer repair instructions. Do not puncture refrigerant tubing.

CAUTION!



CAUTION Risk of fire or explosion due to puncture of refrigerant tubing. Follow handling instructions carefully. Flammable refrigerant used.

This appliance is for storage only and should not be used for any other purpose.

Do not store or use gasoline or other flammable vapors and liquids in the vicinity of this or any other appliance.

Do not store explosive substances such as aerosol cans with a flammable propellant in this appliance.

Do not operate the appliance in the presence of explosive fumes. Avoid contact with any moving parts of automatic ice maker.

Remove all staples from the carton. Staples can cause severe cuts, and also destroy finishes if they come in contact with other appliances or furniture.

⚠ WARNING!

Do not use electrical appliances inside the food storage compartments of the appliance unless they are of the type recommended by the manufacturer.

⚠ WARNING!

CALIFORNIA RESIDENTS ONLY
WARNING! Cancer and Reproductive Harm <http://www.P65Warnings.ca.gov>

1.6 Proper disposal of your appliance

⚠ CAUTION!

CAUTION Risk of fire or explosion. Dispose of the appliance properly in accordance with the applicable federal or local regulations. Flammable refrigerant used.



Risk of child entrapment

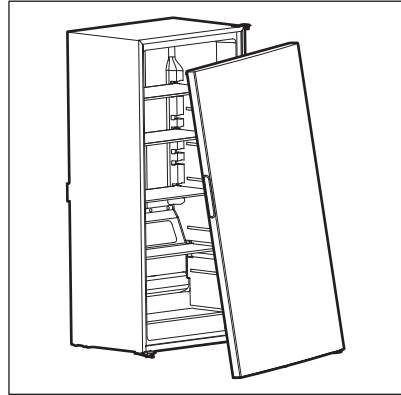
Child entrapment and suffocation are not problems of the past. Junked or abandoned appliances are still dangerous – even if they will sit for “just a few days”. If you are getting rid of your old appliance, follow the instructions below to help prevent accidents.

We strongly encourage responsible appliance recycling/disposal methods. Check with your utility

company or visit <http://www.energystar.gov/recycle> for more information on recycling your old appliance.

Before you throw away your old appliance:

- Remove doors.
- Leave shelves in place so children may not easily climb inside.
- Have it removed by a qualified service technician.



1.7 Electrical information

- The appliance must be plugged into its own dedicated 115 Volt, 60 Hz., 15 Amp, AC only electrical outlet. The power cord of the appliance is equipped with a three-prong grounding plug for your protection against electrical shock hazards. It must be plugged directly into a properly grounded three-prong receptacle. The receptacle must be installed in accordance with local codes and ordinances. Consult a qualified electrician. Do not use an extension cord or adapter plug.

⚠ WARNING!

Avoid fire hazard or electric shock.

- If the power cord is damaged, it should be replaced by an authorized service technician to prevent any risk.
- Never unplug the appliance by pulling on the power cord. Always grip the plug firmly, and pull straight out from the

receptacle to prevent damaging the power cord.

- Unplug the appliance before cleaning and before replacing the AC LED light bulb to avoid electrical shock.
- Performance may be affected if the voltage varies by 10% or more. Operating the appliance with insufficient power can damage the compressor. Such damage is not covered under your warranty.
- Do not plug the unit into an electrical outlet controlled by a wall switch or pull cord to prevent the appliance from being turned off accidentally.
- Do not pinch, knot, or bend the power cord in any manner.

WARNING!

When positioning the appliance, ensure the supply cord is not trapped or damaged. Do not locate multiple portable socket-outlets or portable power supplies at the rear of the appliance.

WARNING!

Do not, under any circumstances, cut, remove, or bypass the grounding prong (A). Always use the power cord with a three-prong grounded plug and grounding type wall receptacle.



2. FEATURES

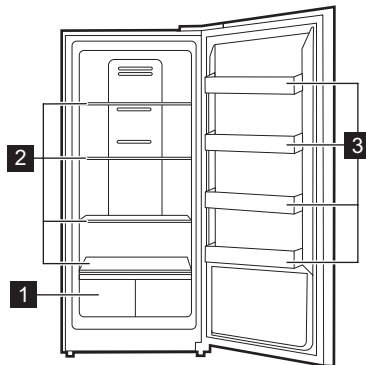
IMPORTANT

Features may vary by model. Accessories are available for your appliance and may be purchased at Frigidaire.com or by calling toll-free 1-800-374-4432.

2.1 Product overview

IMPORTANT

Depending on the model, the appliance can have either an internal or an external control panel. Refer to the Control Panel section to identify your controls.



- 1** Drawer(s) - varies by model
- 2** Shelf
- 3** Door bin

3. INSTALLATION

This User Manual provides general installation and operating instructions for your model. We recommend using a service or kitchen contracting professional to install your appliance. Use the appliance only as instructed in this User Manual. Before starting the appliance, follow these important first steps.

3.1 ✓ Installation Checklist

Doors

- Handles are secure and tight
- Door seals completely the cabinet on all sides
- Freezer door is level from side to side across the top

Leveling

- Appliance is level side-to-side and tilted 1/4" (6 mm) front-to-back
- Cabinet is setting solid on all corners
- Anti-tip bracket set in front on both sides

Electrical Power

- House power is turned on
- Appliance is plugged in

Final Checks

- Shipping material is removed
- Registration card is sent in

3.2 Moving the appliance

IMPORTANT

The appliance is heavy. Always move the appliance with two people. When moving it for cleaning or service, remove all food, unplug the appliance, secure the power cord, and tape the movable parts. Cover the floor with cardboard or hardboard to prevent damage. Always pull the appliance straight out. Do not wiggle or "walk" the appliance, because this can damage the floor.

3.3 Connecting the appliance

After installation, wait at least 2 hours before switching on the power. Switching on the appliance too soon can reduce cooling performance or cause damage.

IMPORTANT

Let the appliance run empty for 24 hours to cool the compartment to the correct temperature.

3.4 Cleaning the appliance

IMPORTANT

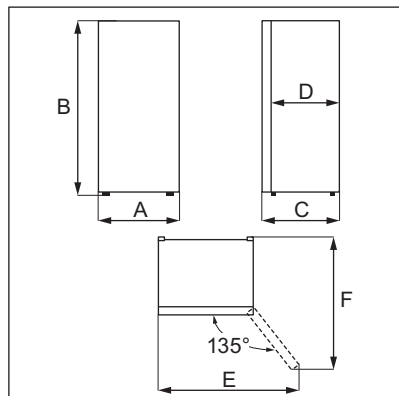
Remove tape and glue residue from surfaces before turning the appliance on. Rub a small amount of liquid dish soap over the adhesive with your fingers. Rinse with warm water and dry with a soft cloth.

Do not use sharp instruments, rubbing alcohol, flammable fluids, or abrasive cleaners to remove tape or glue. These products can damage the surface of the appliance.

After you remove all of the package materials, clean the inside of the appliance before using it. Refer to Care and Cleaning.

See important information about cleaning glass shelves and covers in the Storage Features section.

3.5 Dimensions



- A. Width: 2' 5.7" (755 mm)
- B. Overall height: 5' 6.6" (1692 mm)
- C. Depth: 2' 8.7" (830 mm)
- D. Depth of the cabinet: 2' 4.9" (734 mm)
- E. Width with door open at 135°: 4' 2.2" (1275 mm)

F. Depth with door open at 135°: 4' 6.9" (1395 mm)

3.6 Location

- If possible, place the appliance out of direct sunlight and away from the range, dishwasher, or other heat sources.
- The appliance must be installed on a floor that is level and strong enough to support a fully loaded appliance.

WARNING!

This appliance is intended for use in residential household and similar interior applications such as:

- Kitchen / kitchenette
- Pantry room
- Basement
- Enclosed garage
- Other interior residential type environments

CAUTION!

Do not install the appliance where the temperature will drop below 38°F (3°C) or rise above 110 °F (43 °C). The compressor will not be able to maintain proper temperatures inside the appliance.

CAUTION!

This appliance is convertible and can operate as a refrigerator or a freezer. Do not install the appliance where the temperature drops below:

- Refrigerator: 110 °F (43 °C).
- Freezer: 38°F (3°C).

The compressor will not be able to maintain proper temperatures inside the appliance.

NOTE

Sufficient air circulation is essential for the proper operation of the appliance.

WARNING!

Allow the following clearances for ease of installation, proper air circulation, plumbing, and electrical connections:

- Top 3/8" (9.5 mm)
- Sides 3/8" (9.5 mm)
- Back 1" (25.4 mm)

NOTE

The exterior walls of the appliance may become warm as the compressor transfers heat from the inside. The temperatures may be even 30°F higher than the room temperature. In hotter climates it is important to allow enough space for air circulation around the appliance.

NOTE

If you place the appliance with the door hinge side against a wall, you may have to allow additional space so the door can be open wider.

3.7 Cabinet leveling and door alignment

Guidelines for final positioning of appliance:

- All 4 corners of the cabinet must rest firmly on the floor.
- The cabinet should be level at the front and rear.
- The door should be level.

3.8 Leveling

When positioning the appliance, ensure that it is level, with all bottom corners resting firmly on a solid floor. You can adjust this using the two leveling feet located at the front bottom of the appliance. To lower the unit, turn the feet clockwise. To raise the unit, turn the feet counterclockwise.

NOTE

The front of the appliance should be slightly higher than the rear to help the doors close properly.

4. DOOR REVERSAL

Some models only.

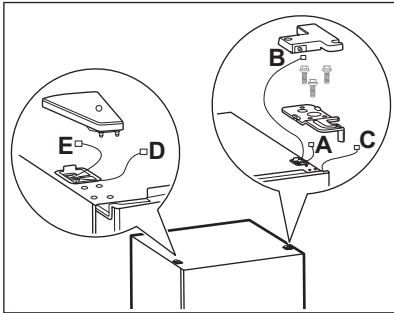
⚠ CAUTION!

To avoid injury or damage, have someone assist you during the procedure.

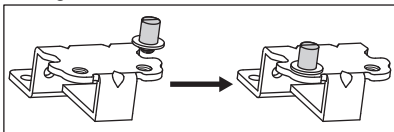
🔧 NOTE

Unplug and empty the appliance.
Keep all the removed parts to reuse them later.

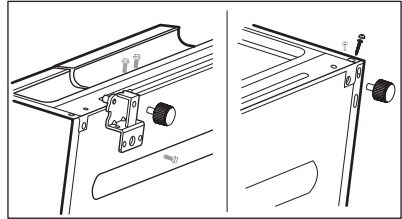
1. Dismantle the upper hinge cover, screws and upper hinge. Remove the hole cover from the other side of the appliance and unplug the wiring connector.



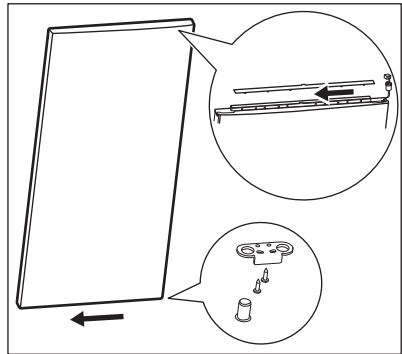
2. Lift the freezer door up and away from the appliance.
3. Unscrew and remove the right middle hinge and adjustable feet.
4. Remove the insert pin, screw cap and screw. Install them on the opposite side of the appliance.
5. Use the flathead screwdriver to move the hinge shaft to the opposite side. Reassemble the bottom hinge on the right side.



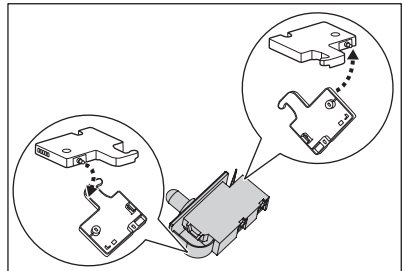
6. Relocate the adjustable feet from the left and right sides, swapping their positions,



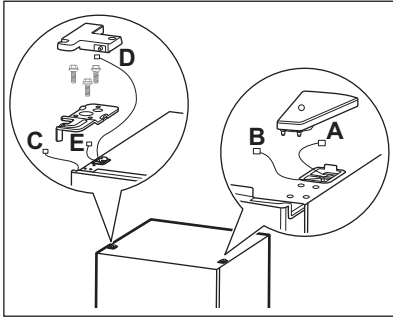
7. Remove the stop block and shaft sleeve and install them on the other side of the door.



8. Place the door onto the hinge pin of the bottom hinge.
9. Take the upper hinge cover from the accessory bag. Remove the switch from the right hinge cover and install it onto the left hinge cover.



10. Connect the signal wire terminal C with signal wire terminal D. Connect the signal wire terminal E to the door switch.



11. Reassemble the left top hinge, hinge cover and hole cover.

5. DOOR HANDLE INSTALLATION

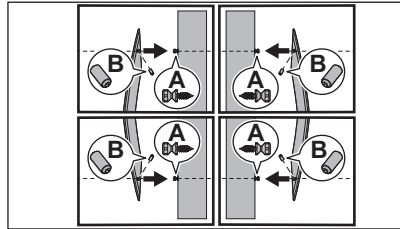
IMPORTANT

Do not use a power tool to unscrew or tighten parts.

To install the door handle:

1. To install part A:
 - a. Locate the holes in the door where part A should be installed.
 - b. With a #3 Phillips head screwdriver install part A. Use firm pressure during installation.
 - c. Ensure part A ends up flush against the cabinet before proceeding to install the handle.
2. Remove the handles and any other protective packaging from the carton.
3. Position the handle end caps over upper and lower pre-installed shoulder bolts (A) that are fastened into door, ensuring the holes for the set screws are facing towards the opposite door.
4. While holding handle firmly against door, fasten upper and lower Allen set screws (B) with supplied Allen wrench.

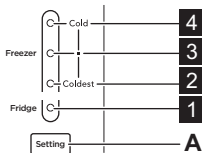
5. Repeat the steps above to install the opposite handle. Ensure the holes for the set screws are facing towards the opposite door.



NOTE

When tightening the Allen set screws, apply force to the longer arm of the Allen wrench supplied in the handle packaging.

6. CONTROL PANEL: INTERNAL, CONVERTIBLE



A. Setting button

- 1 LED 1; Fridge
- 2 LED 2; Coldest
- 3 LED 3; Recommended
- 4 LED 4; Cold

Press the Setting button to scroll through the 4 settings. After the last setting, the sequence starts again.

- For colder freezer temperature, press the Setting button until the LED next to Coldest lights up.
- For warmer freezer temperature, press the Setting button until the LED next to Cold lights up.
- To use the appliance as a refrigerator, press the Setting button until the LED next to Fridge lights up.

NOTE

Before you change the freezer to fridge mode, remove any food that you want to keep frozen. Put the food in another freezer to prevent it from defrosting.

To maintain temperatures, a fan circulates air in the refrigerator and freezer compartments. For good circulation, do not block cold air vents with food items.

6.1 Sabbath Mode

The Sabbath Mode disables parts of the appliance and its controls to support observance of the weekly Sabbath and religious holidays in the Orthodox Jewish community. The compressor and fan keep working in normal mode. Their operation does not change when the door opens or closes.

NOTE

The temperature setting is not affected by the Sabbath mode. Sounds and alarms are off. If a fault occurs, the appliance keeps working in the preset fault mode, but it does not show an error code or make a sound.

1. To enter the Sabbath mode, press and hold the **Setting** button for 5 seconds. The LEDs 1 and 4 light up and stay on when the Sabbath mode is active.
2. To exit the Sabbath mode, press and hold the **Setting** button for 5 seconds. The LEDs return to normal operation.

NOTE

While in Sabbath mode, the lights and the control panel do not work until Sabbath mode is deactivated. The appliance stays in Sabbath mode after power failure recovery. Deactivate it with the appliance control.



For further assistance, guidelines for proper use and a complete list of models with the Sabbath feature, please visit star-k.org.

6.2 Errors

The following error codes can appear on the control panel to indicate a malfunction. The appliance may operate despite the following errors.

The LEDs are numbered from the bottom to the top of the control panel:

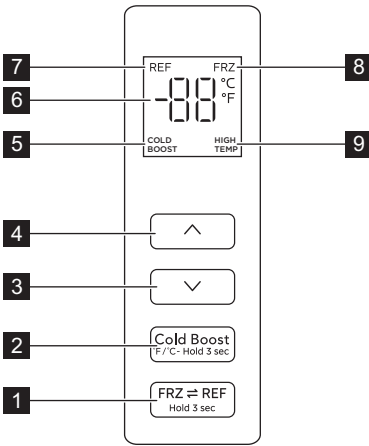
- LED 1: next to the Fridge.
- LED 4: next to Cold.

Error	Description
Flashing LED 1 / 2.	Temperature sensor failure.
Flashing LED 1 / 3.	Defrost temperature sensor failure.
Flashing LED 1 / 4.	The ambient temperature sensor failure.

Fault indication:

- Under normal conditions, the display locks automatically after 15 seconds if no buttons are pressed and the door stays closed.
- The display turns on when the door is open and turns off when the door is closed.
- If a fault that shows a code occurs while the door is open, the fault code appears on the display.

7. CONTROL PANEL: EXTERNAL, CONVERTIBLE



- 1 Refrigerator/Freezer Switch button**
Press and hold for 3 seconds to set the appliance to Refrigerator or Freezer mode. The REF or FRZ indicator appears on the display.

▶ IMPORTANT

Before you change the mode:

- From freezer to refrigerator - remove any food that you want to keep frozen. Put it in another freezer to prevent it from defrosting.
- From refrigerator to freezer - remove any food that you want to keep fresh. Put it in another refrigerator to prevent it from freezing.

- 2 Cold Boost and °F/°C button**
- When the appliance is in Freezer mode, press the button to turn the Cold Boost function on or off. The appliance temperature sets to -11 °F (-24 °C). The Cold Boost indicator turns on when the function is active. The function turns off automatically after 40 hours and the temperature returns to the previous setting.
 - When the appliance is in Refrigerator mode, press the button to turn the Cold Boost function on or off. The appliance temperature sets to 35 °F (2 °C). The Cold Boost indicator turns on when the

function is active. The function turns off automatically after 6 hours and the temperature returns to the previous setting.

- Press and hold the button for 3 seconds to change the temperature unit.

- 3 Temperature increase button**
Press to increase the temperature.
- 4 Temperature decrease button**
Press to decrease the temperature.
- 5 Cold Boost indicator**
It turns on when the Cold Boost function is active.
- 6 Temperature indicator**
Temperature range for refrigerator: 35 - 46°F (2 - 8 °C).
Temperature range for freezer: -11 - 10°F (-24 - -12°C).
- 7 REF Refrigerator indicator**
It turns on when the appliance is in Refrigerator mode.
- 8 FRZ Freezer indicator**
It turns on when the appliance is in Freezer mode.
- 9 High Temperature indicator**
It turns on when the temperature in the appliance is too high.

7.1 Sabbath Mode

The Sabbath Mode disables parts of the appliance and its controls to support observance of the weekly Sabbath and religious holidays in the Orthodox Jewish community. The compressor and fan keep working in normal mode. Their operation does not change when the door opens or closes.

🔔 NOTE

The temperature setting is not affected by the Sabbath mode. Sounds and alarms are off, except for the High Temperature alarm. If a fault occurs, the appliance keeps working in the preset fault mode, but it does not show an error code or make a sound.

1. To enter the Sabbath Mode, press and hold the **Refrigerator/Freezer Switch**

and **Cold Boost** buttons together for 5 seconds.

The display shows **SB** when the function is active.

2. To exit the Sabbath Mode, press and hold the **Refrigerator/Freezer Switch** and **Cold Boost** buttons together for 5 seconds.

NOTE

While in Sabbath mode, the lights and the control panel do not work until Sabbath mode is deactivated. The appliance stays in Sabbath mode after power failure recovery. Deactivate it with the appliance control.



For further assistance, guidelines for proper use and a complete list of models with the Sabbath feature, please visit star-k.org.

7.2 Display Always-On Mode

To activate or deactivate the Display Always-On mode:

Press and hold the **Temperature increase** and **Temperature decrease** buttons together for 4 seconds.

- When you activate the function, the display shows **ON** for 3 seconds and four rising beeps sound.
- When you deactivate the function, the display shows **OF** for 3 seconds and four falling beeps sound.

7.3 Door Open Alarm

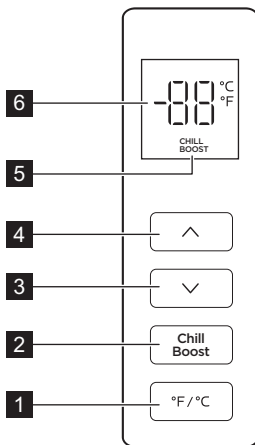
If the door stays open for 3 minutes or more, the alarm sounds. Close the door or press any button to stop the alarm.

7.4 Errors

The following error codes might appear on the display indicating the malfunction of the appliance. The appliance may operate despite the following errors.

Error Code	Description
E1	Refrigerator temperature sensor error.
E5	Defrost sensor error.
E6	Communication failure.
E7	Ambient temperature sensor error.

8. CONTROL PANEL: EXTERNAL, REFRIGERATOR



- 1 **°F/°C** button
Press and hold the button to change the temperature unit.
- 2 **Chill Boost** button

Press the button to turn the Chill Boost function on or off. The appliance temperature sets to 35 °F (2 °C). The Chill Boost indicator turns on when the function is active. The function turns off automatically after 6 hours and the temperature returns to the previous setting.

- 3 **Temperature increase** button
Press to increase the temperature.
- 4 **Temperature decrease** button
Press to decrease the temperature.
- 5 **Chill Boost** indicator
It turns on when the Chill Boost function is active.
- 6 **Temperature** indicator
Temperature range: 35 - 46°F (2 - 8 °C).

8.1 Sabbath Mode

The Sabbath Mode disables parts of the appliance and its controls to support

observance of the weekly Sabbath and religious holidays in the Orthodox Jewish community. The compressor and fan keep working in normal mode. Their operation does not change when the door opens or closes.

NOTE

The temperature setting is not affected by the Sabbath mode. Sounds and alarms are off. If a fault occurs, the appliance keeps working in the preset fault mode, but it does not show an error code or make a sound.

To enter Sabbath mode:

1. To enter the Sabbath mode, press and hold the °F/°C button for 5 seconds. The display shows **SB** when the function is active.
2. To exit the Sabbath mode, press and hold the °F/°C button for 5 seconds.

NOTE

While in Sabbath mode, the lights and the control panel do not work until Sabbath mode is deactivated. The appliance stays in Sabbath mode after power failure recovery. Deactivate it with the appliance control.



For further assistance, guidelines for proper use and a complete list of models with the Sabbath feature, please visit star-k.org.

8.2 Door Open Alarm

If the door stays open for 3 minutes or more, the alarm sounds. Close the door or press any button to stop the alarm.

8.3 Errors

The following error codes might appear on the display indicating the malfunction of the appliance. The appliance may operate despite the following errors.

Error Code	Description
E1	Refrigerator temperature sensor error.
E5	Defrost sensor error.
E6	Communication failure.
E7	Ambient temperature sensor error.

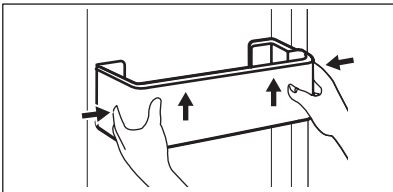
9. STORAGE FEATURES

Equipment varies by model.

9.1 Door Bins

To remove the door bin:

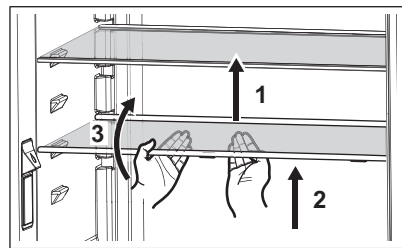
1. Lift the bin up.
2. Pull it straight out.



9.2 Shelves

To remove the shelves:

1. Lift the shelf.
2. Pull it straight out.



9.3 Removing/Installing crisper drawers

Use the crisper to keep produce fresh for longer.

You can remove the drawer for cleaning. To remove the drawer:

1. Pull the drawer out until it stops.
2. Lift the front slightly and remove the drawer.

To install the drawer, reverse the procedure.

10. STORING FOOD AND SAVING ENERGY

10.1 Saving Energy

For optimal appliance performance and food quality:

- Place the freezer in the coolest area of the room, away from heat-producing appliances, heating ducts, and direct sunlight.
- Allow hot foods to cool to room temperature before placing them in the freezer. Overloading the freezer can cause the freezer compressor to run longer. Foods that freeze too slowly may lose quality or spoil.
- Wrap foods properly and ensure containers are dry before placing them in the freezer to prevent frost buildup.
- Organize and label food to minimize lid openings and search time. Take out all needed items at once and close the lid promptly.

10.2 Ideas for storing food

Fresh food storage

- Keep the fresh food compartment between 34°F and 40°F, with an optimum temperature of 37°F.
- Avoid overcrowding the refrigerator shelves, which reduces air circulation and causes uneven cooling.
- Avoid placing food in front of air ports.

Fruits and vegetables

- Store fruits and vegetables in crisper drawers, where trapped moisture helps preserve food quality for longer time periods.

- Wash items and remove excess water.
- Wrap any items that have strong odors or high moisture content.

Meat

- Wrap raw meat and poultry separately and securely to prevent leaks and contamination of other foods or surfaces.

Frozen foods storage

- Keep the freezer compartment at 0°F or lower.
- A freezer operates most efficiently when it is at least 2/3 full.

Packaging foods for freezing

- To minimize food dehydration and quality deterioration, use aluminum foil, freezer wrap, freezer bags, or airtight containers. Force as much air out of the packages as possible and seal them tightly. Trapped air can cause food to dry out, change color, and develop an off-flavor (freezer burn).
- Wrap fresh meats and poultry with suitable freezer wrap prior to freezing.
- Do not refreeze meat that has completely thawed.

Loading the freezer

- Avoid adding too much warm food to the freezer at one time. This overloads the freezer, slows the rate of freezing, and can raise the temperature of frozen foods.
- Leave a space between packages, so cold air can circulate freely, allowing food to freeze as quickly as possible.

11. CARE AND CLEANING

11.1 Protecting your investment

Keeping your appliance clean maintains its appearance and prevents odor build-up. Wipe up any spills immediately and clean the appliance and fresh food compartments at least twice a year. When cleaning, take the following precautions:

- Never use chloride or cleaners with bleach to clean stainless steel.

- Do not wash any removable parts in a dishwasher.
- Always unplug the electrical power cord from the wall outlet before cleaning.
- Do not remove the serial plate. Removal of your serial plate voids your warranty.
- Remove adhesive labels by hand. Do not use razor blades or other sharp

instruments which can scratch the appliance surface.

Do not use abrasive cleaners such as window sprays, scouring cleansers, brushes, flammable fluids, cleaning waxes, concentrated detergents, bleaches or cleansers containing petroleum products on plastic parts, interior doors, gaskets or cabinet liners. Do not use paper towels, metallic scouring pads, or other abrasive cleaning materials or strong alkaline solutions.

Refer to the guide below for more details on caring and cleaning specific areas of your appliance.

 **CAUTION!**

Pull the appliance straight out to move it. Shifting it from side to side may damage flooring.

 **CAUTION!**

Damp objects stick to cold metal surfaces. Do not touch refrigerated surfaces with wet or damp hands.

Some upright freezers are frost-free and defrost automatically, but should be cleaned occasionally.

11.3 Care & Cleaning Tips

Part	What to use	Tips and precautions
Interior and door liners	<ul style="list-style-type: none"> • Soap and water • Baking soda and water 	Use 2 tablespoons of baking soda in 1 quart of warm water. Be sure to wring excess water out of sponge or cloth before cleaning around controls, light bulb or any electrical part.
Door gaskets	Soap and water	Wipe gaskets with a clean soft cloth.
Glass shelves	<ul style="list-style-type: none"> • Soap and water • Glass cleaner • Mild liquid sprays 	Allow glass to warm to room temperature before immersing in warm water.
Exterior and handles	<ul style="list-style-type: none"> • Soap and water • Non abrasive glass cleaner 	Do not use commercial household cleaners containing ammonia, bleach or alcohol to clean handles. Use a soft cloth to clean smooth handles. Do not use a dry cloth to clean smooth doors.

11.2 Cleaning

Before cleaning remove food from the appliance and store it well covered.

Clean the appliance interior and accessories regularly with a cloth and lukewarm water.

Do not use abrasive cleaners. After cleaning rinse with fresh water and dry thoroughly with a clean cloth.

 **CAUTION!**

Unplug the appliance from the power source before cleaning to avoid electrical hazard. Never clean the appliance with a steam cleaner. Allow the appliance to dry before using it.

 **IMPORTANT**

Do not use organic solvents, such as lemon juice, juice from an orange peel, butyric acid, or cleaners containing acetic acid.

Part	What to use	Tips and precautions
Exterior and handles (Stainless steel models only)	<ul style="list-style-type: none"> • Soap and water • Stainless steel cleaners 	<p>Never use chloride or cleaners with bleach to clean stainless steel.</p> <p>Clean stainless steel front and handles with non-abrasive soapy water and a dishcloth. Rinse with clean water and a soft cloth. Use a non-abrasive stainless steel cleaner. These cleaners can be purchased at most home improvement or major department stores. Always follow manufacturer's instructions. Do not use household cleaners containing ammonia or bleach.</p> <p>Always clean, wipe and dry with the grain to prevent scratching. Wash the rest of the cabinet with warm water and mild liquid detergent. Rinse well, and wipe dry with a clean soft cloth.</p>

11.4 Vacation and moving tips

Short vacations

- Leave the appliance operating during vacations of three weeks or less.
- Use all perishable items from the appliance.

Long vacation

- Remove all food and ice if you will be gone one month or more.
- Unplug the appliance.
- Clean interior thoroughly.
- Leave the appliance doors open to prevent odors and mold from forming. If necessary, block the doors open.

Moving

- Unplug the appliance
- Remove all food and ice.
- Recommend use of a handcart, load from the side.
- Adjust rollers all the way up to protect them during sliding or moving.
- Pad cabinet to avoid scratching surface.

12. TROUBLESHOOTING

Let us help you troubleshoot your concern! This section will help you with common issues. If you need us, visit our website, chat with an agent, or call us. We may be able to help you avoid a service visit. If you do need service, we can get that started for you! Visit Frigidaire.com or call toll-free 1-800-374-4432.

Opening/Closing of Doors/Drawers

Concern	Potential cause	Common solution
Door(s) does not close.	Door was closed too hard, causing other door to open slightly.	Close both doors gently.
	Refrigerator is not level. It rocks on the floor when moved slightly.	Ensure floor is level and solid, and can adequately support the refrigerator. Contact a carpenter to correct a sagging or sloping floor.
	Refrigerator is touching a wall or cabinet.	Ensure floor is level and solid, and can adequately support the refrigerator. Contact a carpenter to correct a sagging or sloping floor.
	Food/packaging is obstructing the door from closing.	Make sure there is no food/packaging blocking the doorway.

Concern	Potential cause	Common solution
Drawers are difficult to move.	Food is touching shelf on top of drawer.	Remove top layer of items in drawer.
	Track that drawers slide on is dirty.	<ul style="list-style-type: none"> • Ensure drawer is properly installed on track. • Clean drawer, rollers, and track. Refer to Care and Cleaning.

Running of appliance

Concern	Potential cause	Common solution
Compressor does not run.	The appliance is unplugged.	Ensure plug is tightly pushed into outlet.
	Refrigerator is in defrost cycle.	This is normal for a fully automatic defrost refrigerator. The defrost cycle occurs periodically, lasting about 30 minutes.
	House fuse blown or tripped circuit breaker.	Check/replace fuse with a 15 amp time-delay fuse. Reset circuit breaker.
	Power outage.	Check house lights. Call local electric company.

Water/Moisture/Frost Inside Refrigerator

Concern	Potential cause	Common solution
Moisture collects on inside of refrigerator walls.	Weather is hot and humid.	The rate of frost buildup and internal sweating increases.
	Flipper mullion	Adjust flipper mullion. Refer to Flipper Mullion in Installation.
	Door is slightly open.	See the Opening/Closing of Doors/Drawers section above.
Water collects on bottom side of drawer cover.	Vegetables contain and give off moisture.	<ul style="list-style-type: none"> • It is not unusual to have moisture on the bottom side of the cover. • Move humidity control (some models) to lower setting.
Water collects in bottom of drawer.	Washed vegetables and fruit drain while in the drawer.	Water collecting in bottom of drawer is normal. Dry items before putting them in the drawer or store produce in tightly sealed bags to help reduce condensation inside of the drawer.

Water/Moisture/Frost Outside Refrigerator

Concern	Potential cause	Common solution
Moisture collects on outside of refrigerator or between doors.	Weather is humid.	This is normal in humid weather. When humidity is lower, the moisture should disappear.
	Door is slightly open, causing cold air from inside refrigerator to meet warm air from outside.	See the Opening/Closing of Doors/Drawers section above.

13. LIMITED WARRANTY

Your appliance is covered by a one year limited warranty. For one year from your date of delivery, Electrolux will pay all costs for repairing or replacing any parts of this appliance that prove to be defective in materials or workmanship when such appliance is installed, used and maintained in accordance with the provided instructions.

Exclusions

This warranty does not cover the following:

1. Products with original serial numbers that have been removed, altered or cannot be readily determined.
2. Product that has been transferred from its original owner to another party or removed outside the USA, Puerto Rico, or Canada.
3. Rust on the interior or exterior of the unit.
4. Products purchased "as-is" are not covered by this warranty.
5. Food loss due to any refrigerator or freezer failures.
6. Products used in a commercial setting.
7. Service calls which do not involve malfunction or defects in materials or workmanship, or for appliances not in ordinary household use or used other than in accordance with the provided instructions.
8. Service calls to correct the installation of your appliance or to instruct you how to use your appliance.
9. Expenses for making the appliance accessible for servicing, such as removal of trim, cupboards, shelves, etc., which are not a part of the appliance when it is shipped from the factory.
10. Service calls to repair or replace appliance light bulbs, air filters, water

- filters, other consumables, or knobs, handles, or other cosmetic parts.
11. Surcharges including, but not limited to, any after hour, weekend, or holiday service calls, tolls, ferry trip charges, or mileage expense for service calls to remote areas, including the state of Alaska.
12. Damages to the finish of appliance or home incurred during transportation or installation, including but not limited to floors, cabinets, walls, etc.
13. Damages caused by: services performed by unauthorized service companies; use of parts other than genuine Electrolux parts or parts obtained from persons other than authorized service companies; or external causes such as abuse, misuse, inadequate power supply, accidents, fires, or acts of God.

DISCLAIMER OF IMPLIED WARRANTIES; LIMITATION OF REMEDIES

CUSTOMER'S SOLE AND EXCLUSIVE REMEDY UNDER THIS LIMITED WARRANTY SHALL BE PRODUCT REPAIR OR REPLACEMENT AS PROVIDED HEREIN. CLAIMS BASED ON IMPLIED WARRANTIES, INCLUDING WARRANTIES OF MERCHANTABILITY OR FITNESS FOR A PARTICULAR PURPOSE, ARE LIMITED TO ONE YEAR OR THE SHORTEST PERIOD ALLOWED BY LAW, BUT NOT LESS THAN ONE YEAR. ELECTROLUX SHALL NOT BE LIABLE FOR CONSEQUENTIAL OR INCIDENTAL DAMAGES SUCH AS PROPERTY DAMAGE AND INCIDENTAL EXPENSES RESULTING FROM ANY BREACH OF THIS WRITTEN LIMITED WARRANTY OR ANY IMPLIED WARRANTY. SOME STATES AND

PROVINCES DO NOT ALLOW THE EXCLUSION OR LIMITATION OF INCIDENTAL OR CONSEQUENTIAL DAMAGES, OR LIMITATIONS ON THE DURATION OF IMPLIED WARRANTIES, SO THESE LIMITATIONS OR EXCLUSIONS MAY NOT APPLY TO YOU. THIS WRITTEN WARRANTY GIVES YOU SPECIFIC LEGAL RIGHTS. YOU MAY ALSO HAVE OTHER RIGHTS THAT VARY FROM STATE TO STATE.

If You Need Service

Keep your receipt, delivery slip, or some other appropriate payment record to establish the warranty period should service be required. If service is performed, it is in your best interest to obtain and keep all receipts. Service under this warranty must be obtained by contacting Electrolux at the addresses or phone numbers below.

This warranty only applies in the USA, Puerto Rico and Canada. In the USA and Puerto Rico, your appliance is warranted

by Electrolux Consumer Products, Inc. In Canada, your appliance is warranted by Electrolux Canada Corp. Electrolux authorizes no person to change or add to any obligations under this warranty. Obligations for service and parts under this warranty must be performed by Electrolux or an authorized service company. Product features or specifications as described or illustrated are subject to change without notice.

USA

1-800-374-4432

Electrolux Consumer Products, Inc.
10200 David Taylor Drive
Charlotte, NC 28262

Canada

1-800-265-8352

Electrolux Canada Corp.
5855 Terry Fox Way
Mississauga, Ontario, Canada L5V 3E4







14. QUEBEC RIGHT TO REPAIR

Though Frigidaire makes every effort to make replacement parts, repair services and information necessary to maintain or repair our products available to consumers, parts, service and information are not guaranteed, pursuant to section 39 of the Consumer Protection Act, CQLR, c. P-40.1 and sections 79.18 to 79.20 of the Regulation respecting the application of the Consumer Protection Act, CQLR, c P-40.1, r. 3. If you need replacement parts, you may call us at 1 (800) 265-8352 for service in French or English, or purchase online at **Frigidaire Parts | Shop Frigidaire Replacement Parts & Accessories - Frigidaire Appliance Parts.**

You may book repair services online at <https://www.frigidaire.ca/RIGHT-TO-REPAIR/>. Alternatively, our resource library is available at **Resource Library | Frigidaire** to help you diagnose and resolve issues which may arise during the lifetime of your appliance.

Though most parts are available for purchase, subject to short-term availability constraints, the following appliances and parts are not serviceable.

Legend

Availability of replacement parts, repair services, and information for maintenance or repair.		
	Partially Available	
	Not Available	
	Available	
Refrigerators		Cabinet, 14cu ft and less no sealed system parts
Freezer		9 cu. ft and less no sealed system parts.
Beverage Centers		Only cosmetic parts available

